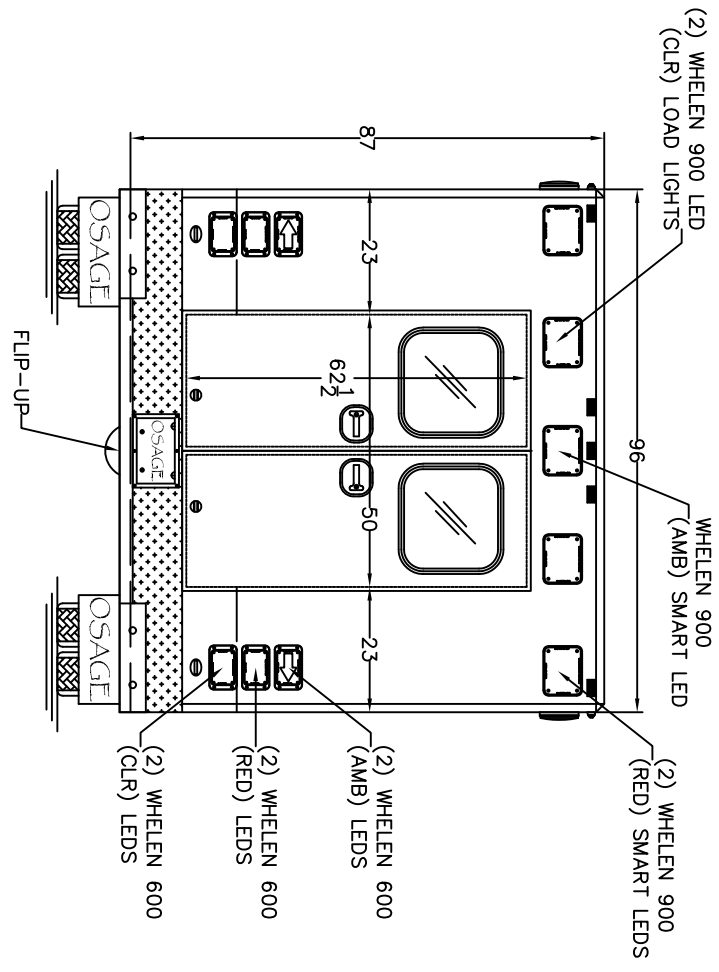
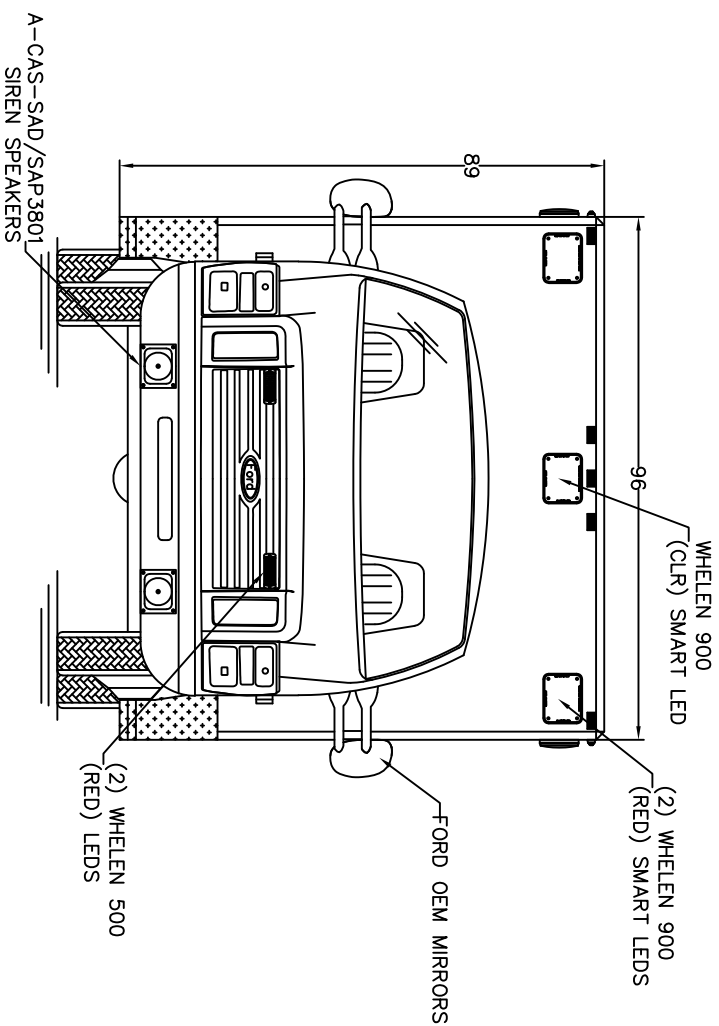


NOTES: THIS DRAWING IS NOT TO SCALE. CHARACTERISTICS AND DIMENSIONS OF FINISHED PRODUCT MAY VARY.

- NOTES:
- 1.) COMPARTMENT DIMENSIONS REFLECT OPENING CLEARANCE.
 - 2.) APPROXIMATE COMPARTMENT DEPTH=19"DEEP.
 - 3.) MODULE DIMENSIONS=168"L x 96"W x 89"H.
 - 4.) INTERIOR MODULE HEAD ROOM=72"H.
 - 5.) ALL 9x7 LIGHTS TO BE WHELEN 900 SERIES LIGHTS.
 - 6.) DOUBLE STAINLESS THRESHOLDS.
 - 7.) STYROFOAM INSULATION, WALLS & CEILING.

3					
2					
1					
Rev.#	Revision Description	Date	Rev'd	App'v'd	
Stock/Job#:		Drawing#:		Cust. App'v./Date#:	
Osage Dealer:		20-3-2168-SW-100			
End Customer:		TWIN RIDGE ROAD		F.O. BOX 718	
NOTICE		Drawn By:		Date:	
This drawing and/or the information hereon is the exclusive property of Osage Industries and shall not be reproduced, used or disclosed without the authorized written consent of Osage Industries.		S.A.H.		06-05-19	
Drawing Description:		Scale:		Deal'r App'v./Date:	
EXTERIOR LAYOUT		NOT TO SCALE			
TYPE-III SUPER-WARRIOR, ESERIES		Revision#		1	



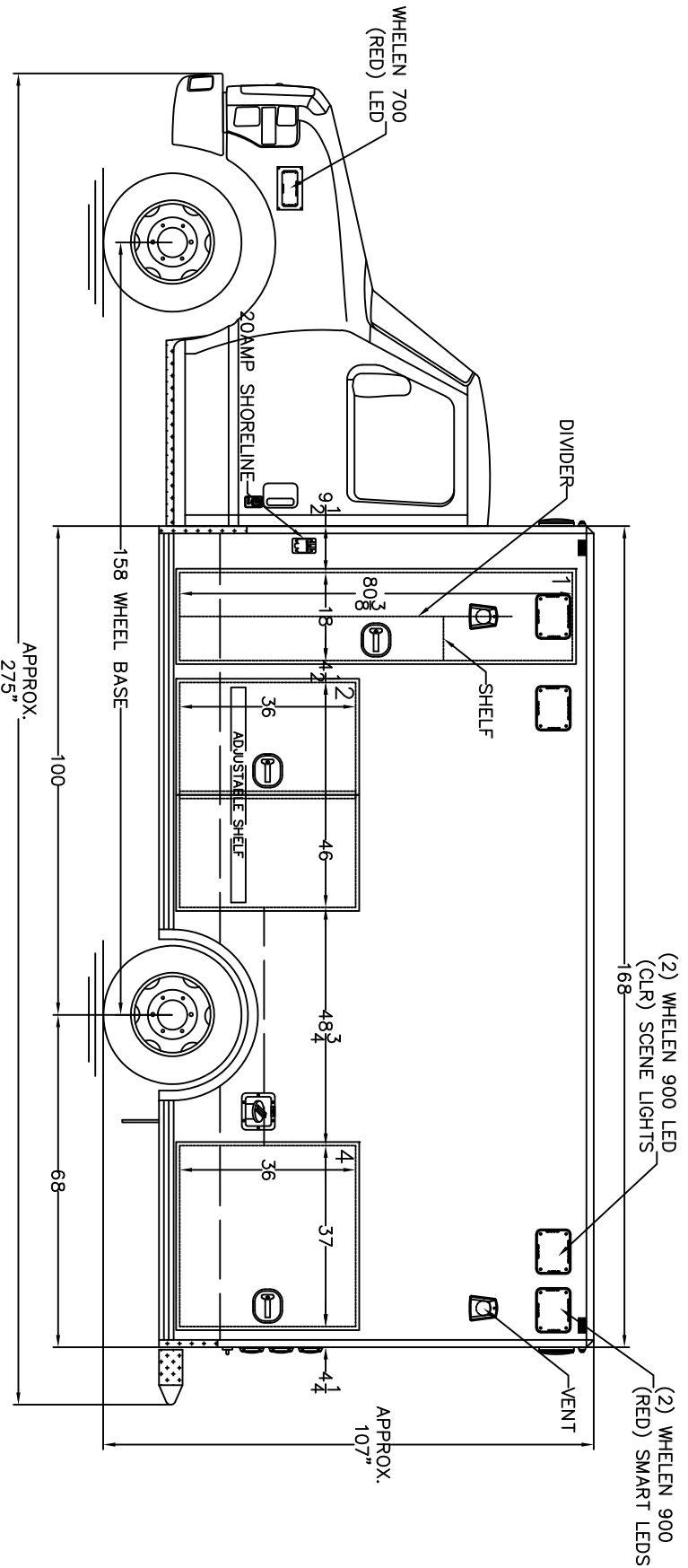
NOTES: THIS DRAWING IS NOT TO SCALE.
 CHARACTERISTICS AND DIMENSIONS OF FINISHED PRODUCT MAY VARY.

- NOTES:
- 1.) COMPARTMENT DIMENSIONS REFLECT OPENING CLEARANCE.
 - 2.) APPROXIMATE COMPARTMENT DEPTH=19"DEEP.
 - 3.) MODULE DIMENSIONS=168"L x 96"W x 89"H.
 - 4.) INTERIOR MODULE HEAD ROOM=72"H.
 - 5.) ALL 9x7 LIGHTS TO BE WHELEN 900 SERIES LIGHTS.
 - 6.) DOUBLE STAINLESS THRESHOLDS.
 - 7.) STYROFOAM INSULATION, WALLS & CEILING.

3			
2			
1			
Rev.#	Revision Description	Date	Rev'd App'vd

Stock/Job#:	Drawing#:	Cust. App'v/Date#	Deal'r App'v/Date:
Osage Dealer:	20-3-2168-SW-100		
End Customer:	TWIN RIDGE ROAD		
	P.O. BOX 718		
	LINN, MO. 65051		
NOTICE			
This drawing and/or the information hereon is the exclusive property of Osage Industries and shall not be reproduced, used or disclosed without the authorized written consent of Osage Industries.			
Drawing Description:		Date:	Scale:
EXTERIOR LAYOUT, FRONT/REAR TYPE-III SUPER-WARRIOR, ESERIES		06-05-19	NOT TO SCALE
Drawn By: S.A.H.			Revision#
			1

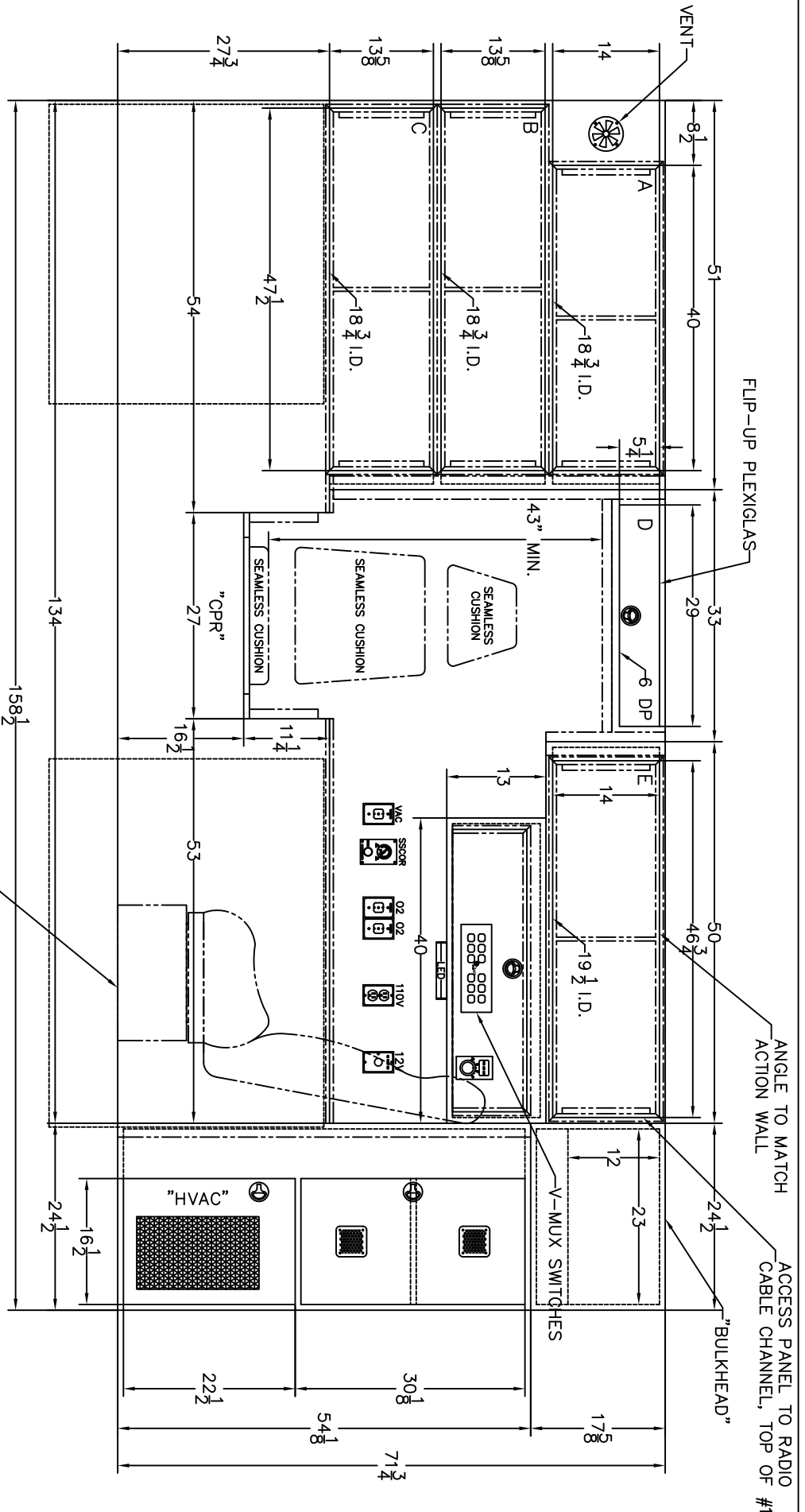
Osage Industries, Inc.



- NOTES: THIS DRAWING IS NOT TO SCALE.
 CHARACTERISTICS AND DIMENSIONS OF FINISHED PRODUCT MAY VARY.
- NOTES:
- 1.) COMPARTMENT DIMENSIONS REFLECT OPENING CLEARANCE.
 - 2.) APPROXIMATE COMPARTMENT DEPTH=19"DEEP.
 - 3.) MODULE DIMENSIONS=168"L x 96"W x 89"H.
 - 4.) INTERIOR MODULE HEAD ROOM=72"H.
 - 5.) ALL 9x7 LIGHTS TO BE WHELEEN 900 SERIES LIGHTS.
 - 6.) DOUBLE STAINLESS THRESHOLDS.
 - 7.) STYROFOAM INSULATION, WALLS & CEILING.

3			
2			
1			
Rev.#	Revision Description	Date	Rev'd App'vd

Stock/Job#:	Drawing#:	Cust. App'v/Date#	Deal'r App'v/Date:
Osage Dealer:	20-3-2168-SW-100		
End Customer:	TWIN RIDGE ROAD		
	Osage Industries, Inc.		
	P.O. BOX 718		
	LINN, MO. 65051		
NOTICE			
This drawing and/or the information hereon is the exclusive property of Osage Industries and shall not be reproduced, used or disclosed without the authorized written consent of Osage Industries.			
Drawn By:	S.A.H.	Date:	06-05-19
Drawing Description:	EXTERIOR LAYOUT, STREETSIDE TYPE-III SUPER-WARRIOR, ESERIES		
Scale:	NOT TO SCALE		
Revision#	1		

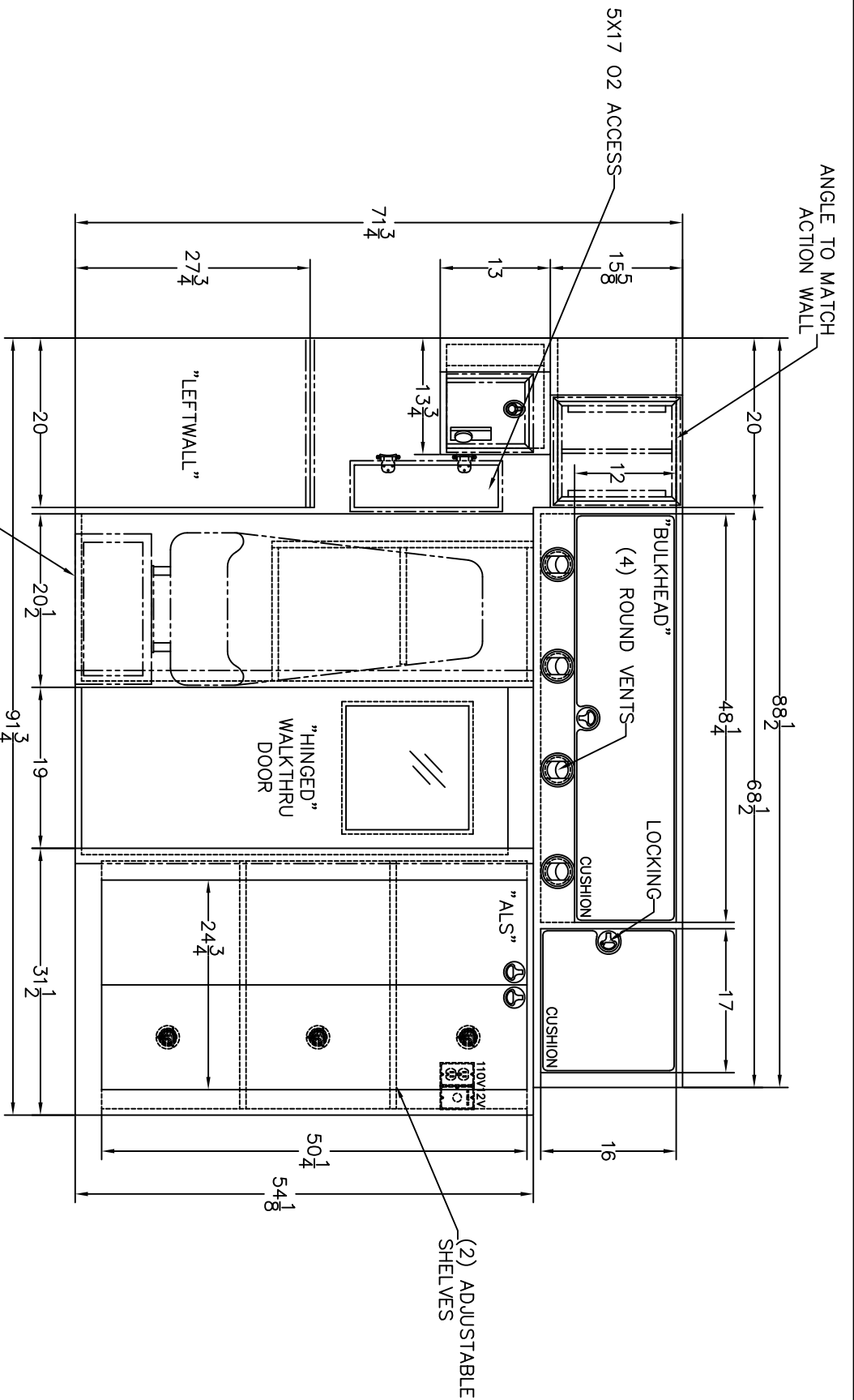


E.V.S. 3-PT. ATTENDANT SEAT

NOTES: THIS DRAWING IS NOT TO SCALE.
 CHARACTERISTICS AND DIMENSIONS OF FINISHED PRODUCT MAY VARY.
 NOTES: CABINET DEPTHS REPRESENT DIMENSION FROM INSIDE REAR TO FRONT FACE OF CABINETS, WITHOUT TRIM. ACTUAL WORKING DEPTH WILL BE LESS THAN DIMENSION SHOWN UNLESS OTHERWISE SPECIFIED.

Rev.#	Revision Description	Date	Rev'd App'vd
3			
2			
1			

Stock/Job#:	Drawing#:	Cust. App'v/Date#:	Deal'r App'v/Date:
Osage Dealer:	20-3-2168-SW-101		
End Customer:	TWINRIDGE ROAD		
	Osage Industries, Inc.		
	P.O. BOX 718		
	LINN, MO. 65051		
NOTICE			
This drawing and/or the information hereon is the exclusive property of Osage Industries and shall not be reproduced, used or disclosed without the authorized written consent of Osage Industries.			
Drawn By:	S.A.H.	Date:	06-05-19
Drawing Description:	STREETSIDE INTERIOR		Scale: NOT TO SCALE
	TYPE-III SUPER-WARRIOR, ESERIES		Revision#
			1

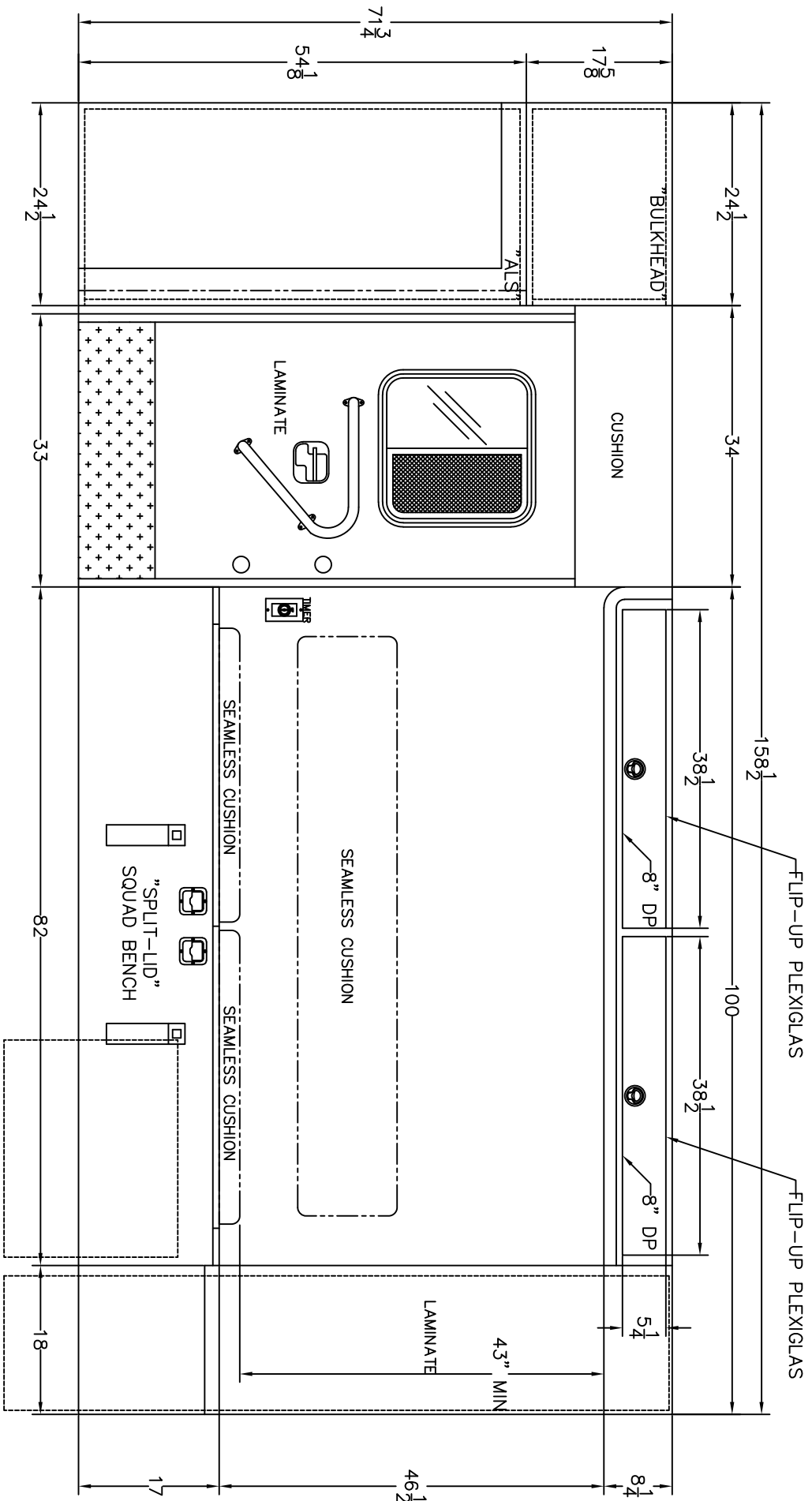


NOTES: THIS DRAWING IS NOT TO SCALE.
 CHARACTERISTICS AND DIMENSIONS OF FINISHED PRODUCT MAY VARY.

NOTES: CABINET DEPTHS REPRESENT DIMENSION FROM INSIDE REAR TO FRONT FACE OF CABINETS, WITHOUT TRIM. ACTUAL WORKING DEPTH WILL BE LESS THAN DIMENSION SHOWN UNLESS OTHERWISE SPECIFIED.

3			
2			
1			
Rev.#	Revision Description	Date	Rev'd App'vd

Stock/Job#	Drawing#	Cust. App'v/Date#	Decl'r App'v/Date:
Osage Dealer:	20-3-2168-SW-102		
End Customer:	TWINRIDGE ROAD		
	Osage Industries, Inc.		
	P.O. BOX 718		
	LINN, MO. 63051		
NOTICE			
This drawing and/or the information hereon is the exclusive property of Osage Industries and shall not be reproduced, used or disclosed without the authorized written consent of Osage Industries.			
Drawn By:	S.A.H.	Date:	06-05-19
Drawing Description:	FORWARD INTERIOR TYPE-III SUPER-WARRIOR, ESERIES		Scale: NOT TO SCALE
			Revision#
			1

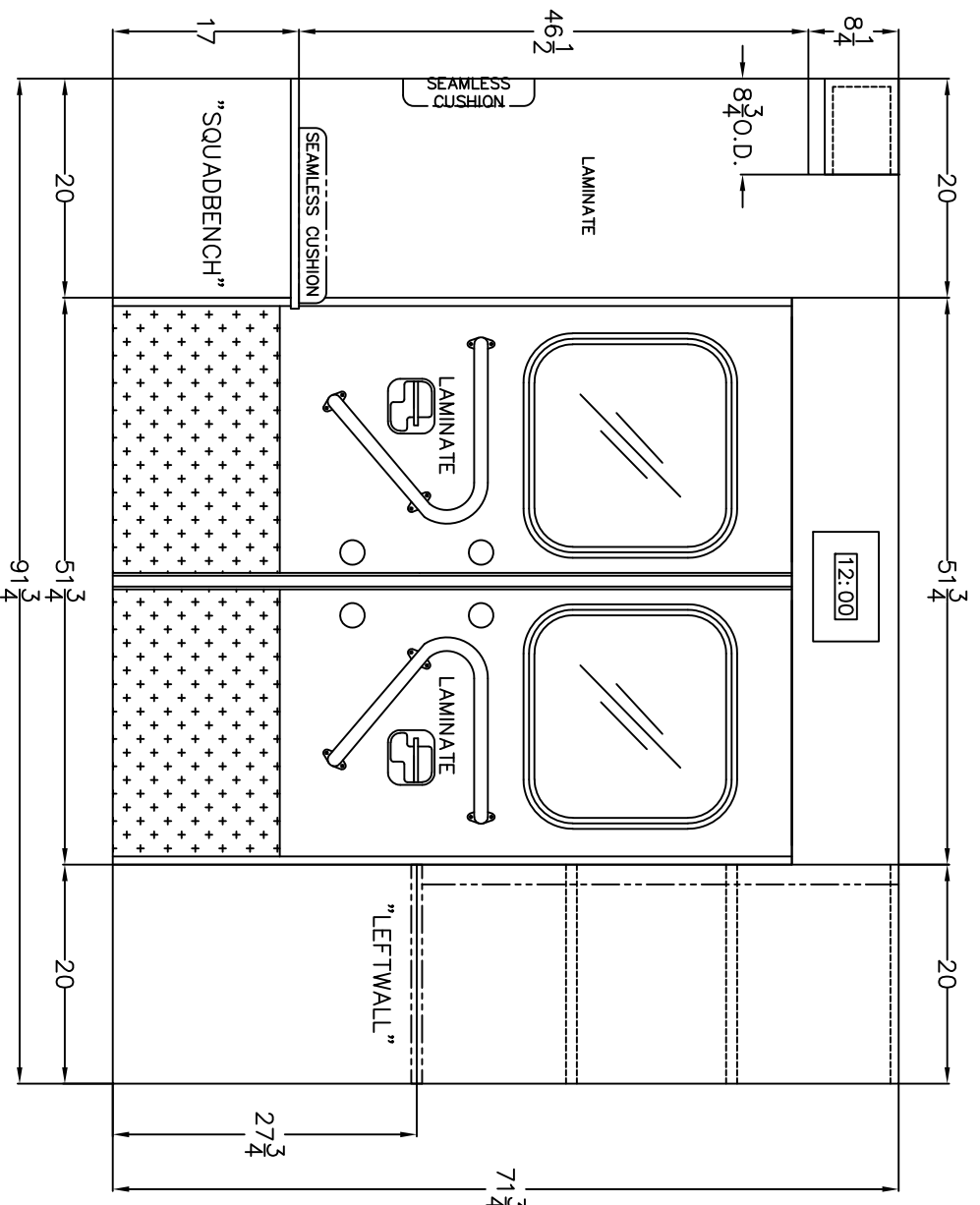


NOTES: THIS DRAWING IS NOT TO SCALE.
 CHARACTERISTICS AND DIMENSIONS OF FINISHED PRODUCT MAY VARY.

NOTES: CABINET DEPTHS REPRESENT DIMENSION FROM INSIDE REAR TO FRONT FACE OF CABINETS, WITHOUT TRIM. ACTUAL WORKING DEPTH WILL BE LESS THAN DIMENSION SHOWN UNLESS OTHERWISE SPECIFIED.

3					
2					
1					
Rev.#	Revision Description	Date	Rev'd	App'vd	

Stock/Job#	Drawing#	Cust. App'v/Date#	Decl'r App'v/Date:
Osage Dealer:	20-3-2168-SW-103		
End Customer:	TWINRIDGE ROAD		
	Osage Industries, Inc.		
	P.O. BOX 718		
	LINN, MO. 63051		
NOTICE			
This drawing and/or the information hereon is the exclusive property of Osage Industries and shall not be reproduced, used or disclosed without the authorized written consent of Osage Industries.			
Drawing Description:	S.A.H.	Date:	Scale:
Drawn By:	06-05-19		NOT TO SCALE
CURBSIDE INTERIOR TYPE-III SUPER-WARRIOR, ESERIES			Revision#
			1



NOTES: THIS DRAWING IS NOT TO SCALE.
 CHARACTERISTICS AND DIMENSIONS OF FINISHED PRODUCT MAY VARY.
 NOTES: CABINET DEPTHS REPRESENT DIMENSION FROM INSIDE REAR TO FRONT FACE OF CABINETS, WITHOUT TRIM. ACTUAL WORKING DEPTH WILL BE LESS THAN DIMENSION SHOWN UNLESS OTHERWISE SPECIFIED.

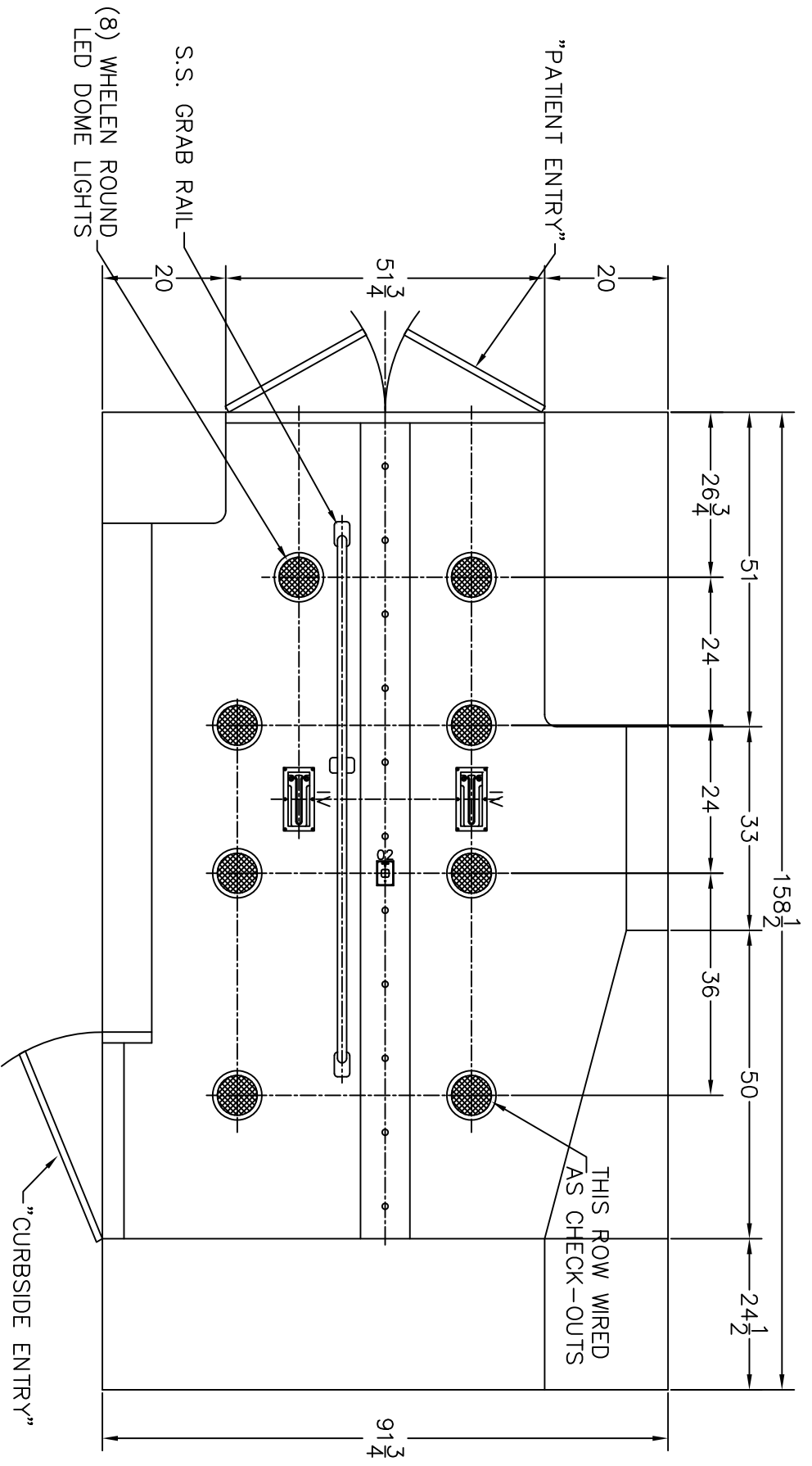
3	Revision Description	Date	Rev'd	App'vd
2				
1				
Rev.#	Revision Description	Date	Rev'd	App'vd

Stock/Job#:	Drawing#:	Cust. App'v/Date#	Deal'r App'v/Date:
Osage Dealer:	20-3-2168-SW-104		
End Customer:			

NOTICE	
This drawing and/or the information hereon is the exclusive property of Osage Industries and shall not be reproduced, used or disclosed without the authorized written consent of Osage Industries.	

Drawn By:	Date:	Scale:
S.A.H.	06-05-19	NOT TO SCALE

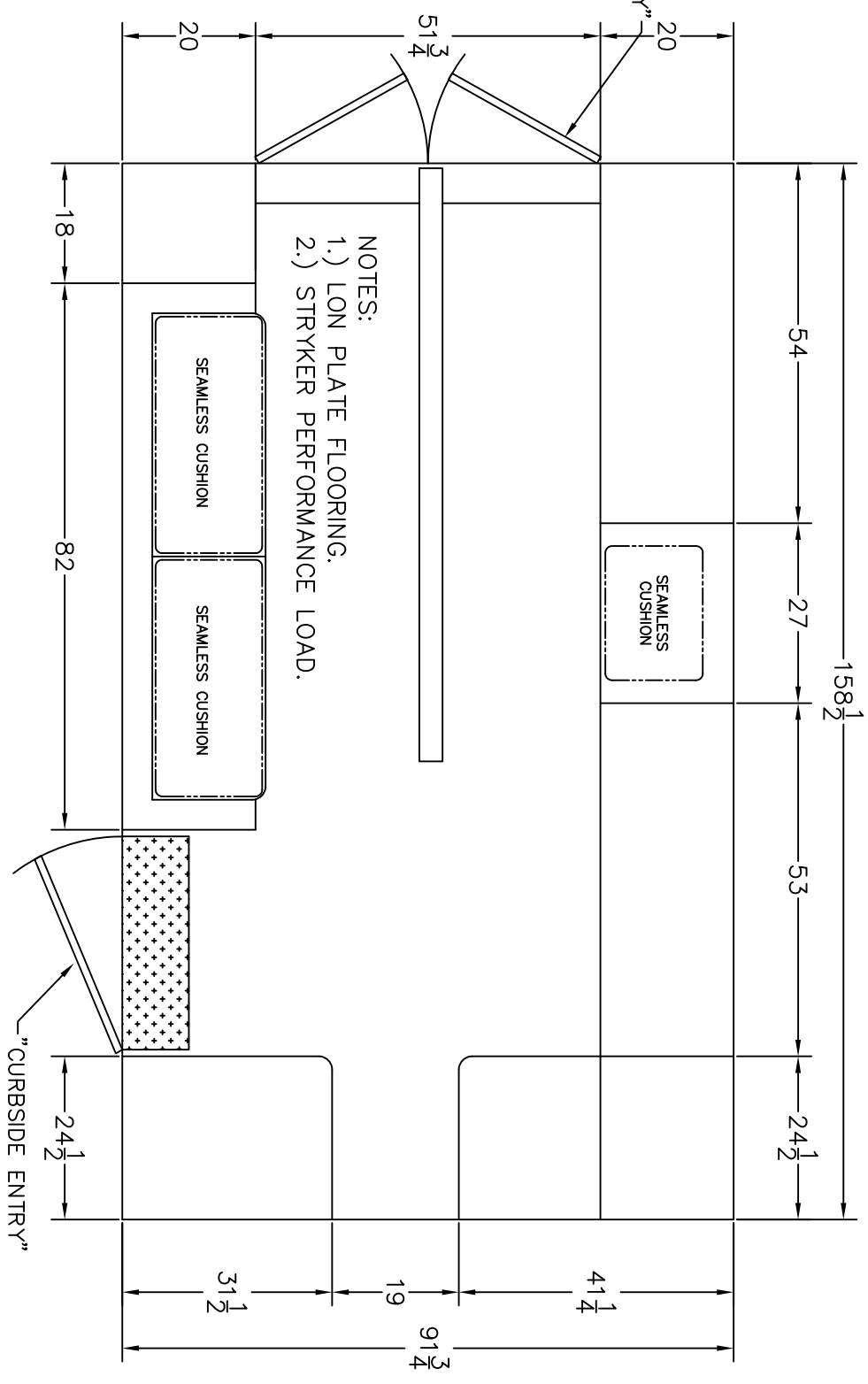
Drawing Description:	Revision#
REARWARD INTERIOR TYPE-III SUPER-WARRIOR, ESERIES	1



NOTES: THIS DRAWING IS NOT TO SCALE.
 CHARACTERISTICS AND DIMENSIONS OF FINISHED
 PRODUCT MAY VARY.

Rev.#	Revision Description	Date	Rev'd	App'vd
3				
2				
1				

Stock/Job#:	Drawing#:	Cust. App'v/Date#:	Decl'r App'v/Date:
Osage Dealer:	20-3-2168-SW-105		
End Customer:	TWINRIDGE ROAD		
	Osage Industries, Inc.		
	P.O. BOX 718		
	LINN, MO. 63051		
NOTICE			
This drawing and/or the information hereon is the exclusive property of Osage Industries and shall not be reproduced, used or disclosed without the authorized written consent of Osage Industries.			
Drawn By:	S.A.H.	Date:	06-05-19
Drawing Description:	CEILING LAYOUT		
	TYPE-III SUPER-WARRIOR, ESERIES		
Scale:	NOT TO SCALE		
Revision#:	1		



NOTES:
 1.) LON PLATE FLOORING.
 2.) STRYKER PERFORMANCE LOAD.

NOTES: THIS DRAWING IS NOT TO SCALE.
 CHARACTERISTICS AND DIMENSIONS OF FINISHED
 PRODUCT MAY VARY.

Rev.#	Revision Description	Date	Rev'd	App'vd
3				
2				
1				

Stock/Job#:		Drawing#:		Cust. App'v/Date#:		Deal'r App'v/Date:	
Osage Dealer:		20-3-2168-SW-106					
End Customer:		TWINRIDGE ROAD		S.A.H.		Date:	
		Osage Industries, Inc.		Date:		NOT TO SCALE	
		P.O. BOX 718		06-05-19		NOT TO SCALE	
		LINN, MO. 63051				Revision#	
						1	

NOTICE

This drawing and/or the information hereon is the exclusive property of Osage Industries and shall not be reproduced, used or disclosed without the authorized written consent of Osage Industries.

Drawing Description:

FLOOR LAYOUT
 TYPE-III SUPER-WARRIOR, ESERIES