

DIMENSIONS FOR OVERALL HEIGHT AND LENGTH ARE APPROXIMATE

OVERALL HEIGHT = 112"

OVERALL WIDTH WITH RUB

RAILS & FENDERETTES = 95"

(5) WHELEN 900 SUPER LED WITH CLEAR LENSES
RED / RED / WHITE / RED / RED

(5) TECNIQ S330 AMBER
MINI-LED MARKER LIGHTS

OEM POWER
ADJUSTABLE
MIRRORS

(2) WHELEN 500 RED
LED LIGHTS WITH
CLEAR LENSES

HIDDEN UNLOCK SWITCH
BEHIND THE GRILLE

CAST PRODUCTS
SAD3819/SAP3820 SIREN
SPEAKERS IN THE BUMPER

THIS DRAWING IS FOR REPRESENTATIONAL PURPOSES ONLY. DETAILS ARE CONCEPTUAL AND ARE SUBJECT TO CHANGE DURING DESIGN AND CONSTRUCTION
DIMENSIONS ARE APPROXIMATE UNLESS NOTED OTHERWISE TO MEET A SPECIFIC CUSTOMER NEED.

BRAUN
EXPRESS PLUS



2020 FRONT EXTERIOR VIEW
EXPRESS PLUS / CHEVY 4500 CHASSIS

DATE:
02-14-20
DWG.
AAB

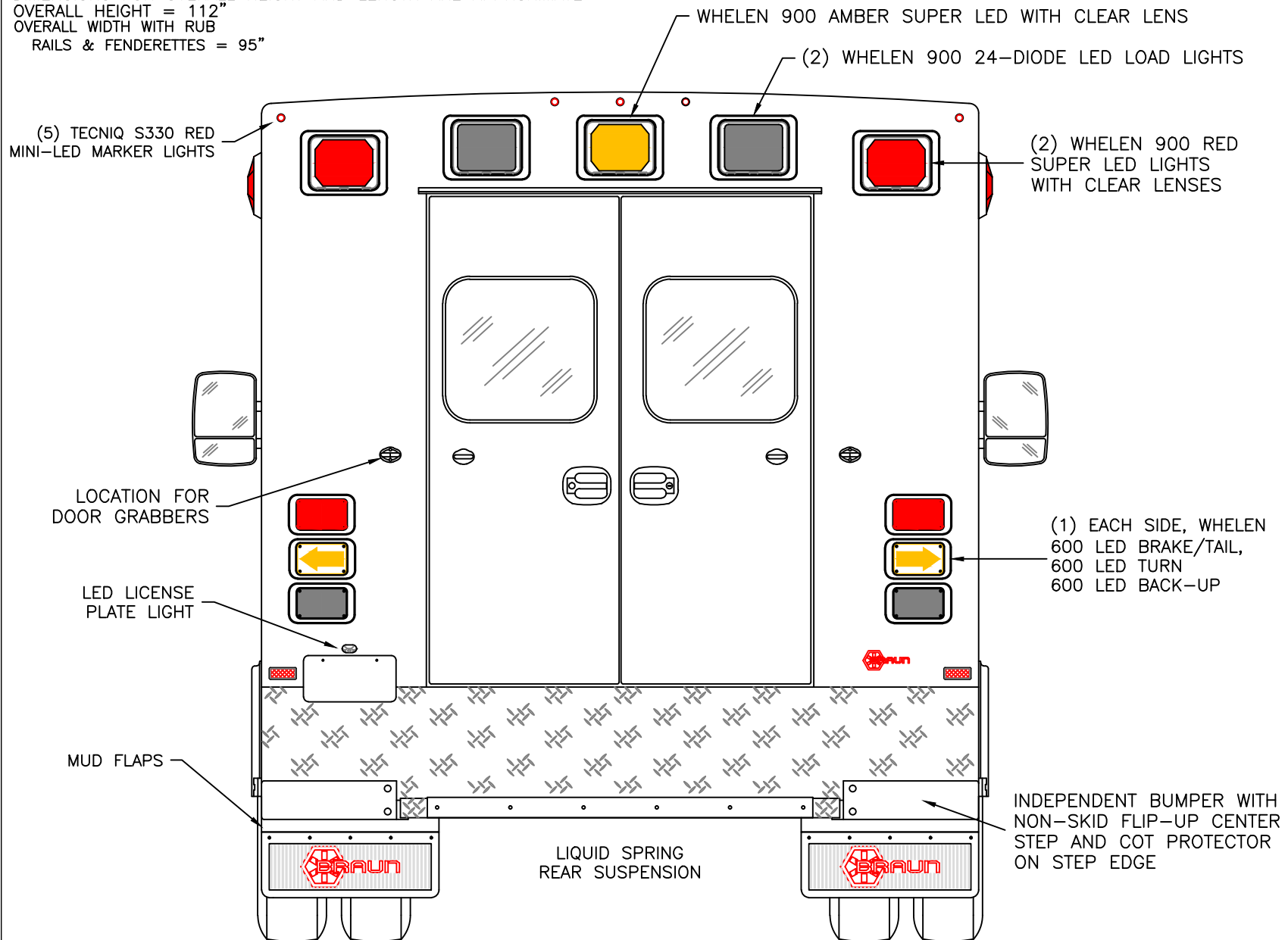
REV.
NR

DRAWING NO.
EXPRESSPLUS-1

APPROVAL SIGNATURE:

DATE:

DIMENSIONS FOR OVERALL HEIGHT AND LENGTH ARE APPROXIMATE
 OVERALL HEIGHT = 112"
 OVERALL WIDTH WITH RUB
 RAILS & FENDERETTES = 95"



THIS DRAWING IS FOR REPRESENTATIONAL PURPOSES ONLY. DETAILS ARE CONCEPTUAL AND ARE SUBJECT TO CHANGE DURING DESIGN AND CONSTRUCTION
 DIMENSIONS ARE APPROXIMATE UNLESS NOTED OTHERWISE TO MEET A SPECIFIC CUSTOMER NEED.

BRAUN
 EXPRESS PLUS

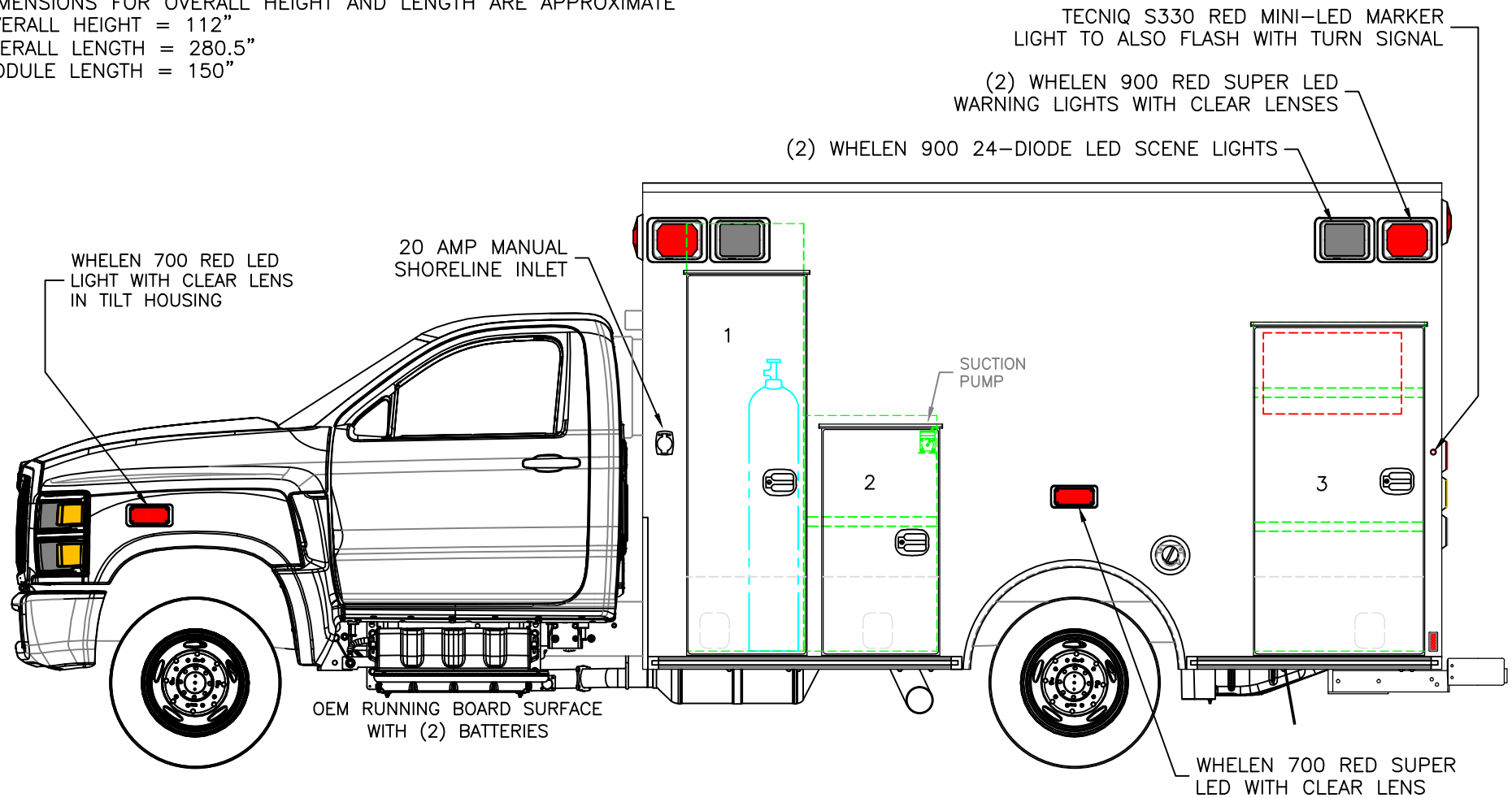


2020 REAR EXTERIOR VIEW
 EXPRESS PLUS

DATE:
 02-14-20
 DWG.
 AAB

DRAWING NO.
 REV.
 NR EXPRESSPLUS-2

DIMENSIONS FOR OVERALL HEIGHT AND LENGTH ARE APPROXIMATE
 OVERALL HEIGHT = 112"
 OVERALL LENGTH = 280.5"
 MODULE LENGTH = 150"



COMPARTMENT
O.S.S #1

CLEAR OPENING: 70.00h x 18.50w
 INSIDE DIM'S.: 80.25h x 22.00w x 20.25d
 OXYGEN STORAGE COMPARTMENT

O.S.S #2

CLEAR OPENING: 41.00h x 19.00w
 INSIDE DIM'S.: 44.25h x 24.75w x 20.25d
 (1) ADJUSTABLE SHELF

O.S.S #3

CLEAR OPENING: 60.25h x 28.50w
 INSIDE DIM'S.: 61.75h x 32.00w x 20.25d
 (2) ADJUSTABLE SHELVES
 INSIDE/OUTSIDE ACCESS

NOTE: LOWERED SIDE FORWARD OF REAR WHEELS
 IS REMOVED ON THIS MODEL DUE TO THE EXHAUST

THIS DRAWING IS FOR REPRESENTATIONAL PURPOSES ONLY. DETAILS ARE CONCEPTUAL AND ARE SUBJECT TO CHANGE DURING DESIGN AND CONSTRUCTION
 DIMENSIONS ARE APPROXIMATE UNLESS NOTED OTHERWISE TO MEET A SPECIFIC CUSTOMER NEED.

BRAUN
EXPRESS PLUS

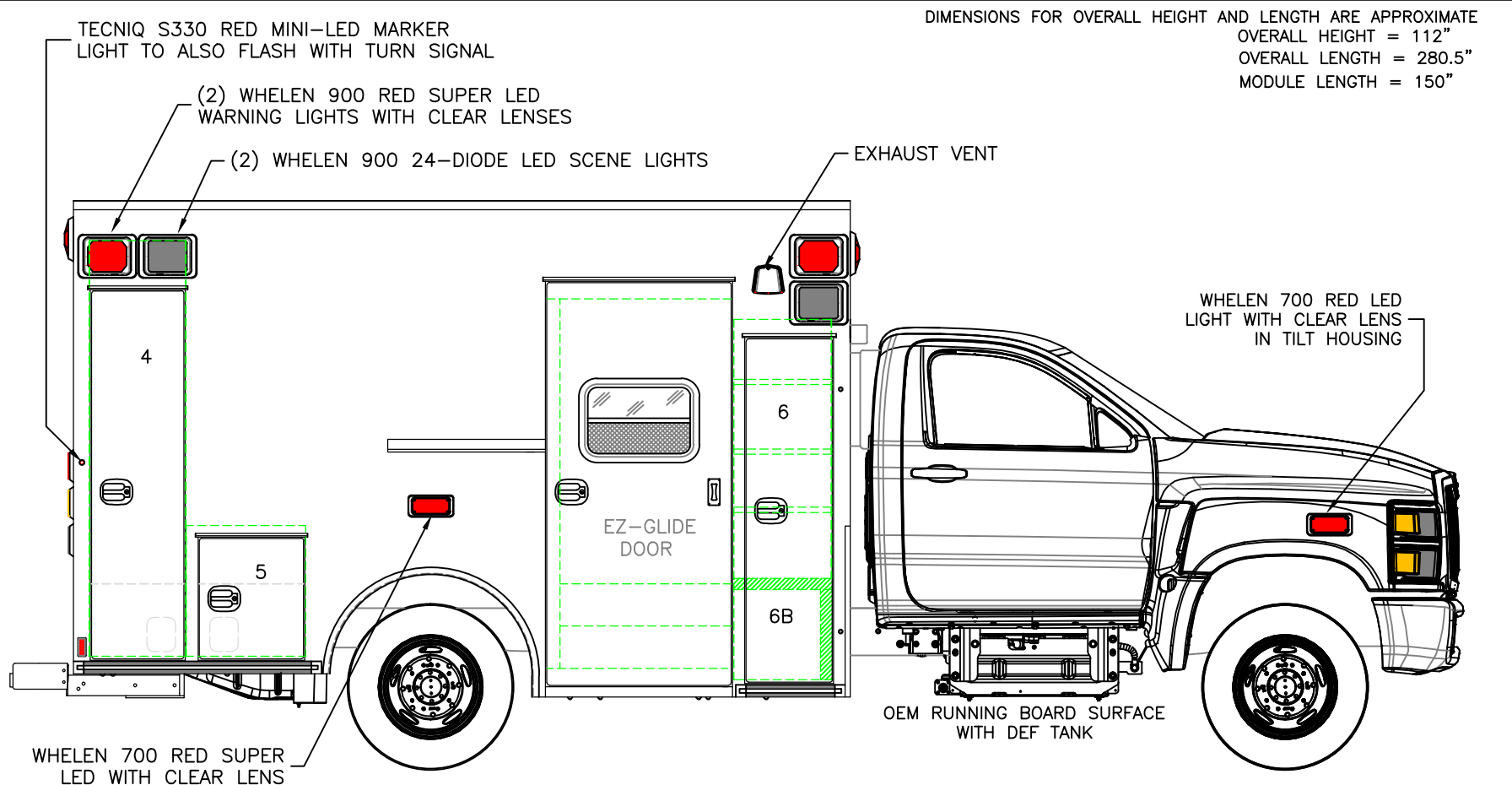


2020 STREETSIDE EXTERIOR VIEW
 EXPRESS PLUS / CHEVY 4500 CHASSIS

DATE:
02-14-20
DWG.
AAB

REV.
NR

DRAWING NO.
EXPRESSPLUS-3



COMPARTMENT

O.S.S #4

CLEAR OPENING: 70.00h x 15.00w
 INSIDE DIM'S.: 80.25h x 18.50w x 20.25d
 BACKBOARD/SCOOP STORAGE

O.S.S #5

CLEAR OPENING: 22.25h x 17.00w
 INSIDE DIM'S.: 25.25h x 23.00w x 20.25d
 MISC. STORAGE COMPARTMENT

O.S.S #6

CLEAR OPENING: 65.25h x 13.50w
 INSIDE DIM'S. 6A: SEE PARTITION INTERIOR VIEW
 INSIDE/OUTSIDE STORAGE WITH (3) ADJUSTABLE SHELVES

INSIDE DIM'S. 6B: 17.25h x 16.75w x 18.50d

THIS DRAWING IS FOR REPRESENTATIONAL PURPOSES ONLY. DETAILS ARE CONCEPTUAL AND ARE SUBJECT TO CHANGE DURING DESIGN AND CONSTRUCTION
 DIMENSIONS ARE APPROXIMATE UNLESS NOTED OTHERWISE TO MEET A SPECIFIC CUSTOMER NEED.

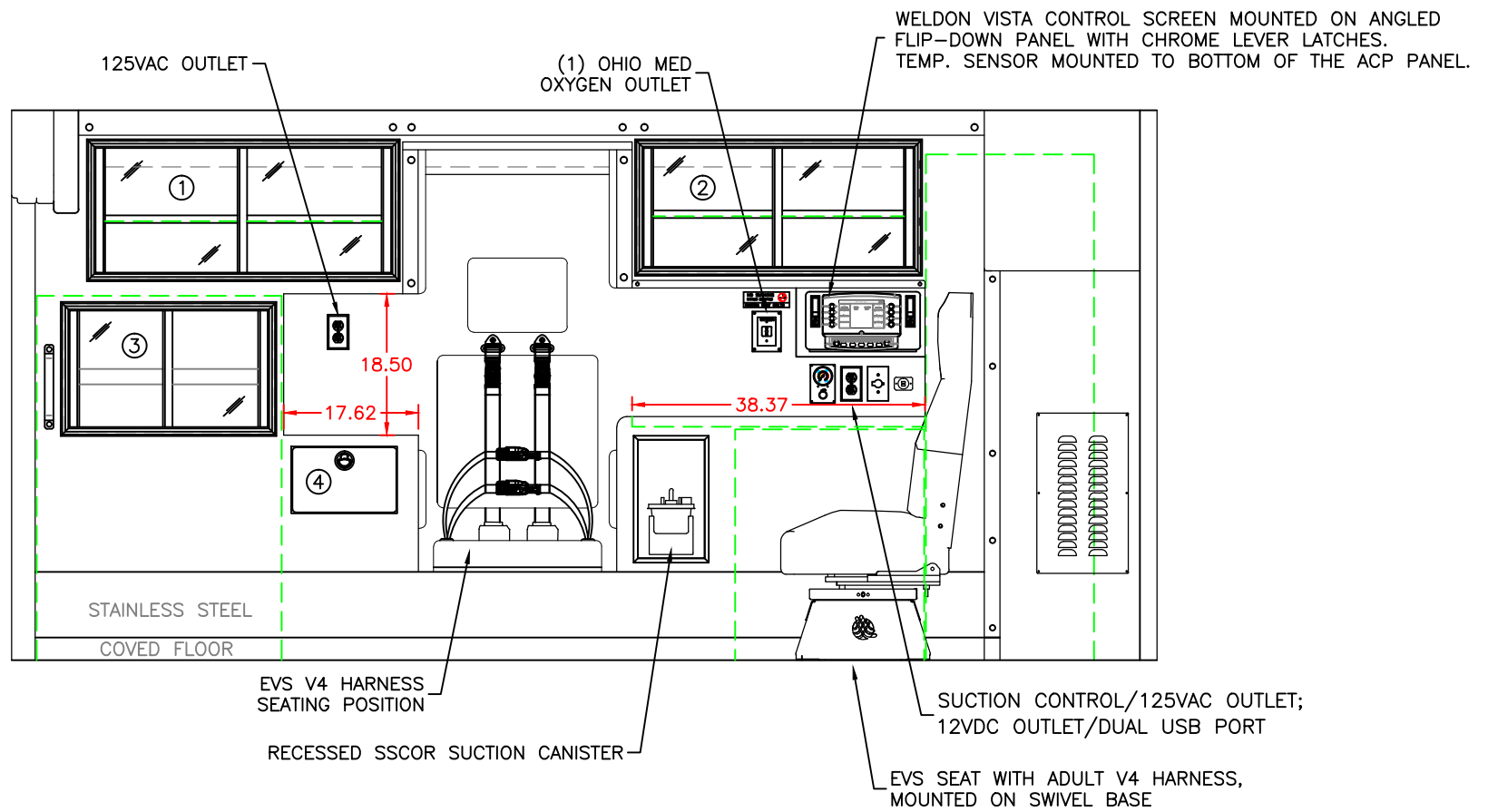
BRAUN
 EXPRESS PLUS



2020 CURBSIDE EXTERIOR VIEW
 EXPRESS PLUS / CHEVY 4500 CHASSIS

DATE:
 02-14-20
 DWG.
 AAB
 REV.
 NR

DRAWING NO.
 EXPRESSPLUS-4



COMPARTMENT

#1 DOOR OPENING: 16.25h x 38.50w
 INSIDE DIMS: 17.75h x 40.25w x 18.00d
 (1) ADJUSTABLE SHELF
 SLIDING POLYCARBONATE DOORS
 TOTAL CABINET WEIGHT RATING = 25 lbs.

#2 DOOR OPENING: 15.50h x 35.25w
 INSIDE DIMS: 17.00h x 36.75w x 18.00d
 (1) ADJUSTABLE SHELF
 SLIDING POLYCARBONATE DOORS
 TOTAL CABINET WEIGHT RATING = 25 lbs.

#3 DOOR OPENING: 15.25h x 26.00w
 INSIDE DIMS: OSS #3
 INSIDE/OUTSIDE ACCESS
 SLIDING POLYCARBONATE DOORS
 TOTAL CABINET WEIGHT RATING = 25 lbs.

#4 PULL-OUT DRAWER
 INSIDE DIMS: 7.50h x 11.75w x 15.75d
 LOCKING STAINLESS STEEL FLUSH PULL LATCH
 TOTAL DRAWER WEIGHT RATING = 10 lbs.

CABINETS TO BE ALUMINUM

THIS DRAWING IS FOR REPRESENTATIONAL PURPOSES ONLY. DETAILS ARE CONCEPTUAL AND ARE SUBJECT TO CHANGE DURING DESIGN AND CONSTRUCTION
 DIMENSIONS ARE APPROXIMATE UNLESS NOTED OTHERWISE TO MEET A SPECIFIC CUSTOMER NEED.

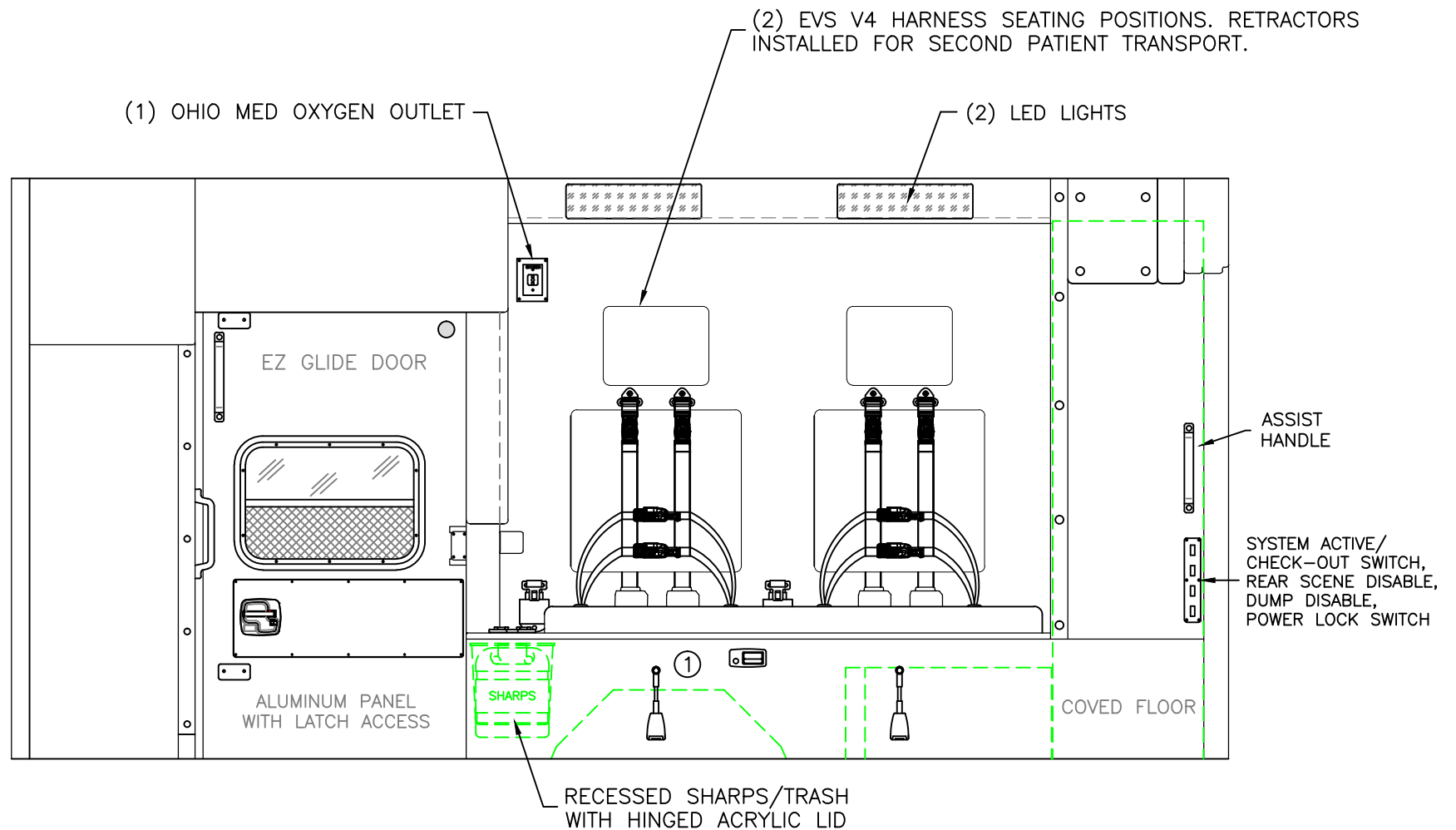
BRAUN
 EXPRESS PLUS



2020 STREETSIDE INTERIOR VIEW
 EXPRESS PLUS

DATE:
02-14-20
 DWG. AAB
 REV. NR

DRAWING NO.
 EXPRESSPLUS-5



#1 INSIDE DIM'S.: 14.50h x 46.00w x 18.75d

CABINETS TO BE ALUMINUM

THIS DRAWING IS FOR REPRESENTATIONAL PURPOSES ONLY. DETAILS ARE CONCEPTUAL AND ARE SUBJECT TO CHANGE DURING DESIGN AND CONSTRUCTION
DIMENSIONS ARE APPROXIMATE UNLESS NOTED OTHERWISE TO MEET A SPECIFIC CUSTOMER NEED.

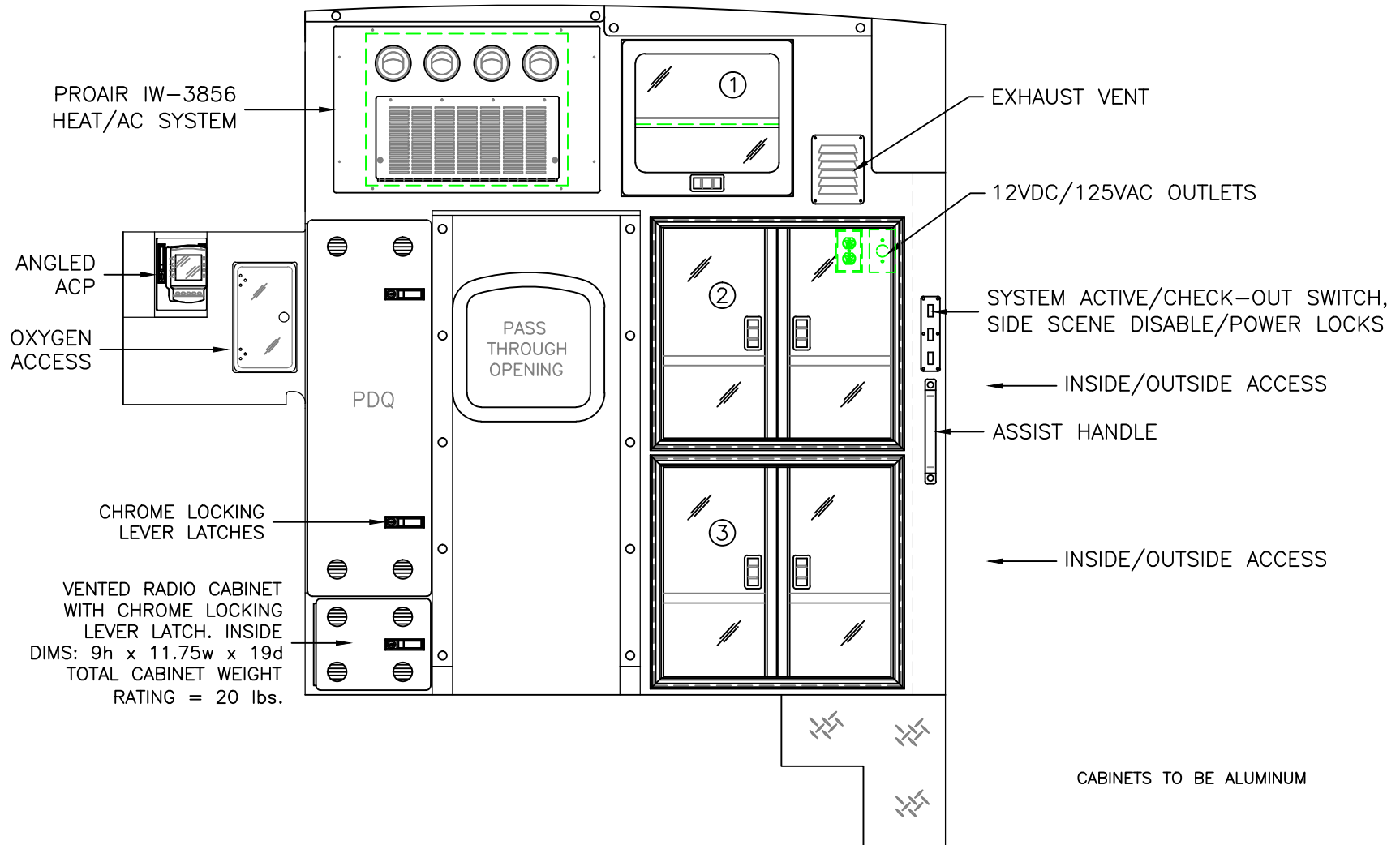
BRAUN
EXPRESS PLUS



2020 CURBSIDE INTERIOR VIEW
EXPRESS PLUS

DATE:
02-14-20
DWG.
AAB

REV.
NR
DRAWING NO.
EXPRESSPLUS-6



COMPARTMENT

#1 DOOR OPENING: 16.50h x 18.25w
 INSIDE DIMS: 16.50h x 18.25w x 16.00d
 HINGED ALUMINUM DOOR WITH POLYCARBONATE INSERT
 CENTER SQUEEZE LATCH AND HOLD-OPENS
 (1) ADJUSTABLE SHELF
 TOTAL CABINET WEIGHT RATING = 25 lbs.

#2/#3 DOOR OPENING: 22.25h x 24.25w
 INSIDE DIMS: 24.00h x 30.25w x 17.75d
 HINGED POLYCARBONATE DOORS WITH FULL LENGTH
 HANDLES AND CENTER SQUEEZE LATCHES
 (1) ADJUSTABLE SHELF PER CABINET
 TOTAL CABINET WEIGHT RATING = 60 lbs. EACH

THIS DRAWING IS FOR REPRESENTATIONAL PURPOSES ONLY. DETAILS ARE CONCEPTUAL AND ARE SUBJECT TO CHANGE DURING DESIGN AND CONSTRUCTION
 DIMENSIONS ARE APPROXIMATE UNLESS NOTED OTHERWISE TO MEET A SPECIFIC CUSTOMER NEED.

BRAUN
 EXPRESS PLUS

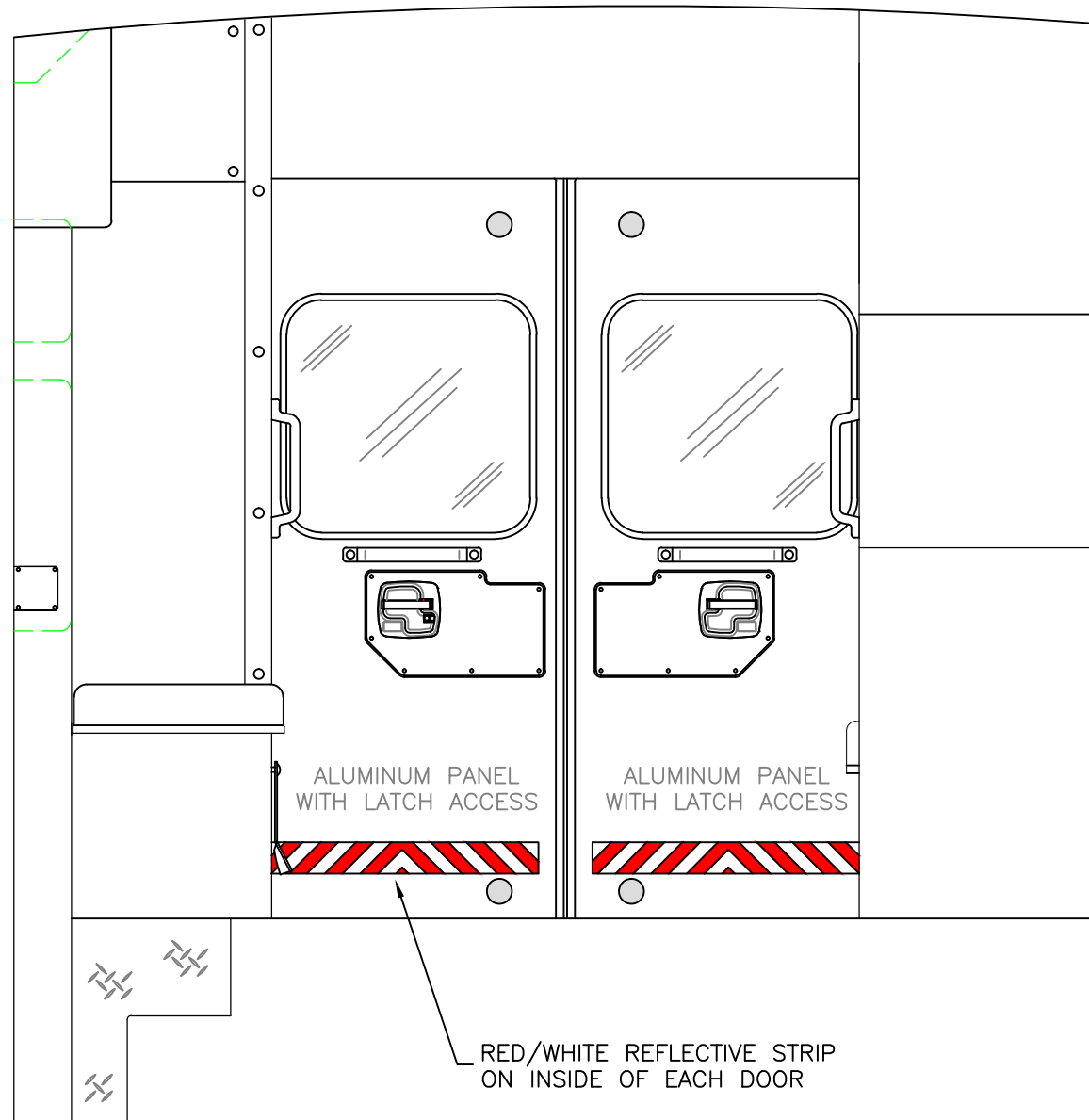


2020 PARTITION INTERIOR VIEW
 EXPRESS PLUS

DATE:
 02-14-20
 DWG.
 AAB

REV.
 NR

DRAWING NO.
 EXPRESSPLUS-7



THIS DRAWING IS FOR REPRESENTATIONAL PURPOSES ONLY. DETAILS ARE CONCEPTUAL AND ARE SUBJECT TO CHANGE DURING DESIGN AND CONSTRUCTION DIMENSIONS ARE APPROXIMATE UNLESS NOTED OTHERWISE TO MEET A SPECIFIC CUSTOMER NEED.

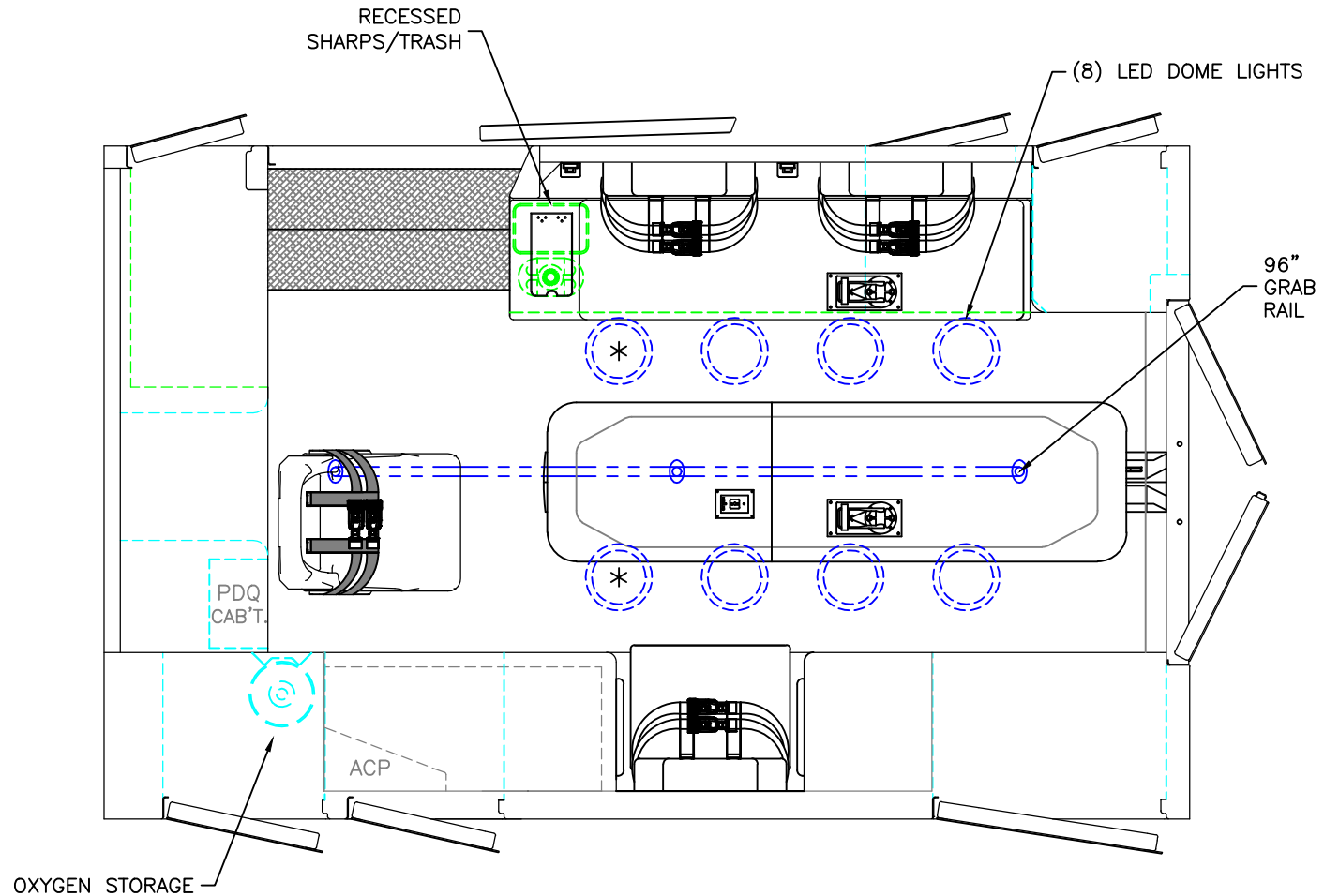
BRAUN
EXPRESS PLUS



2020 REAR INTERIOR VIEW
EXPRESS PLUS

DATE:
02-14-20
DWG. AAB NR

DRAWING NO.
EXPRESSPLUS-8



 = (1) CEILING OXYGEN OUTLET

 = (2) RECESSED CEILING IV HANGER LOCATIONS

* (2) ANTENNA BASES LOCATED OUTBOARD OF DOME LIGHTS WITH COAX SERVICE LOOP

86" FERNO STAT-TRAC CENTER MOUNT COT HARDWARE

MODULE WIDTH = 93"

MODULE LENGTH = 150"

MODULE HEAD ROOM = 72"

THIS DRAWING IS FOR REPRESENTATIONAL PURPOSES ONLY. DETAILS ARE CONCEPTUAL AND ARE SUBJECT TO CHANGE DURING DESIGN AND CONSTRUCTION DIMENSIONS ARE APPROXIMATE UNLESS NOTED OTHERWISE TO MEET A SPECIFIC CUSTOMER NEED.

BRAUN
EXPRESS PLUS



2020 FLOOR INTERIOR VIEW
EXPRESS PLUS

DATE:
02-14-20
DWG.
AAB

REV.
NR
DRAWING NO.
EXPRESSPLUS-9