

DIMENSIONS FOR OVERALL HEIGHT AND LENGTH ARE APPROXIMATE  
 OVERALL HEIGHT = 106.5"  
 OVERALL WIDTH WITH RUB  
 RAILS & FENDERETTES = 98"

(7) WHELEN 900 SUPER LED WARNING LIGHTS  
 RED/RED/RED/WHITE/RED/RED/RED  
 WITH CLEAR LENSES

(5) TECNIQ S330 AMBER  
 MINI-LED MARKER LIGHTS

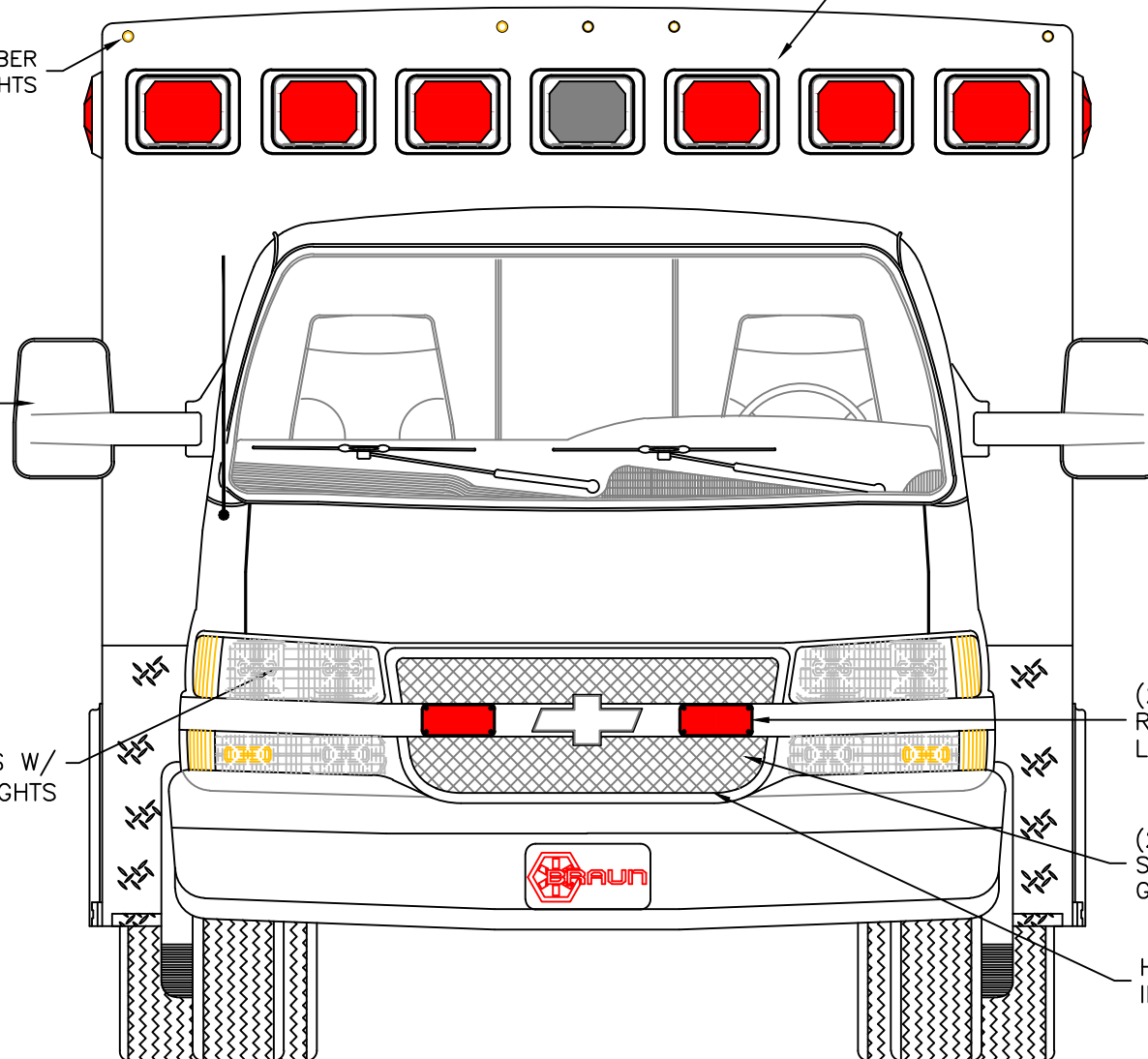
VELVAC 2020XG  
 HEATED/REMOTE  
 MIRRORS

FLASHING HEADLIGHTS W/  
 DAYTIME RUNNING LIGHTS

(2) WHELEN 700 SERIES  
 RED SUPER LED GRILLE  
 LIGHTS WITH CLEAR LENSES

(2) WHELEN SA315 SERIES  
 SIREN SPEAKERS BEHIND  
 GRILLE AREA

HIDDEN UNLOCK SWITCH  
 IN GRILLE AREA



THIS DRAWING IS FOR REPRESENTATIONAL PURPOSES ONLY. DETAILS ARE CONCEPTUAL AND ARE SUBJECT TO CHANGE DURING DESIGN AND CONSTRUCTION  
 DIMENSIONS ARE APPROXIMATE UNLESS NOTED OTHERWISE TO MEET A SPECIFIC CUSTOMER NEED.

BRAUN  
 CHIEF XL



2019 FRONT EXTERIOR VIEW  
 CHIEF XL-III/CHEVY G-4500 GAS CHASSIS

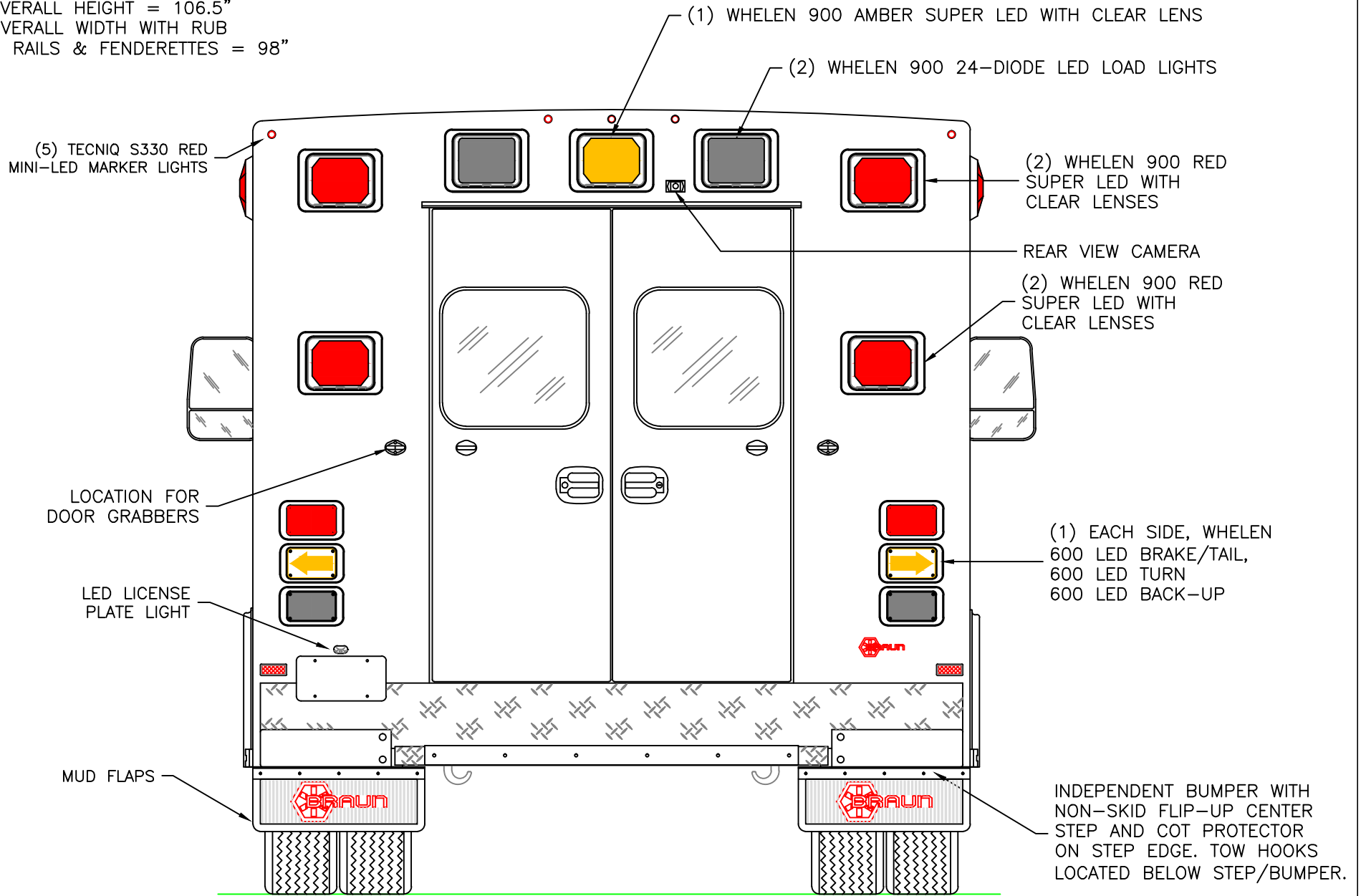
DATE:  
 8-3-18  
 DWG.  
 AAB

REV.  
 NR  
 DRAWING NO.  
 CHIEFXL-1

APPROVAL SIGNATURE:

DATE:

DIMENSIONS FOR OVERALL HEIGHT AND LENGTH ARE APPROXIMATE  
 OVERALL HEIGHT = 106.5"  
 OVERALL WIDTH WITH RUB  
 RAILS & FENDERETTES = 98"



THIS DRAWING IS FOR REPRESENTATIONAL PURPOSES ONLY. DETAILS ARE CONCEPTUAL AND ARE SUBJECT TO CHANGE DURING DESIGN AND CONSTRUCTION  
 DIMENSIONS ARE APPROXIMATE UNLESS NOTED OTHERWISE TO MEET A SPECIFIC CUSTOMER NEED.

BRAUN  
 CHIEF XL



2019 REAR EXTERIOR VIEW  
 CHIEF XL-III/CHEVY G-4500 CHASSIS

DATE:  
 8-3-18  
 DWG.  
 AAB

DRAWING NO.  
 CHIEFXL-2  
 REV.  
 NR

DIMENSIONS FOR OVERALL HEIGHT AND LENGTH ARE APPROXIMATE  
 OVERALL HEIGHT = 106.5"  
 OVERALL LENGTH = 279"  
 MODULE LENGTH = 169"

TECNIQ S330 RED MINI-LED MARKER LIGHT TO ALSO FLASH WITH TURN SIGNAL

(2) WHELEN 900 RED SUPER LED WARNING LIGHTS WITH CLEAR LENSES

(2) WHELEN 900 24-DIODE LED SCENE LIGHTS

KUSSMAUL 20 AMP SUPER AUTO-EJECT SHORELINE INLET

WHELEN 700 RED SUPER LED WITH CLEAR LENS IN TILT HOUSING

EXHAUST VENT

NON-SKID RUNNING BOARD SURFACE

SUCTION PUMP

WHELEN 700 RED SUPER LED WITH CLEAR LENS

COMPARTMENT

O.S.S #1

CLEAR OPENING: 70.00h x 18.25w  
 INSIDE DIM'S.: 79.75h x 24.50w x 20.75d  
 BACKBOARD/SCOOP STORAGE

O.S.S #2

CLEAR OPENING: 37.50h x 38.50w  
 INSIDE DIM'S.: 40.50h x 44.00w x 20.75d  
 (1) ADJUSTABLE SHELF

O.S.S #3

CLEAR OPENING: 58.50h x 30.75w  
 INSIDE DIM'S.: 60.25h x 34.50w x 20.75d  
 INSIDE/OUTSIDE ACCESS  
 (1) ADJUSTABLE SHELF

THIS DRAWING IS FOR REPRESENTATIONAL PURPOSES ONLY. DETAILS ARE CONCEPTUAL AND ARE SUBJECT TO CHANGE DURING DESIGN AND CONSTRUCTION DIMENSIONS ARE APPROXIMATE UNLESS NOTED OTHERWISE TO MEET A SPECIFIC CUSTOMER NEED.

BRAUN  
 CHIEF XL



2019 STREETSIDE EXTERIOR VIEW  
 CHIEF XL-III/CHEVY G-4500 CHASSIS

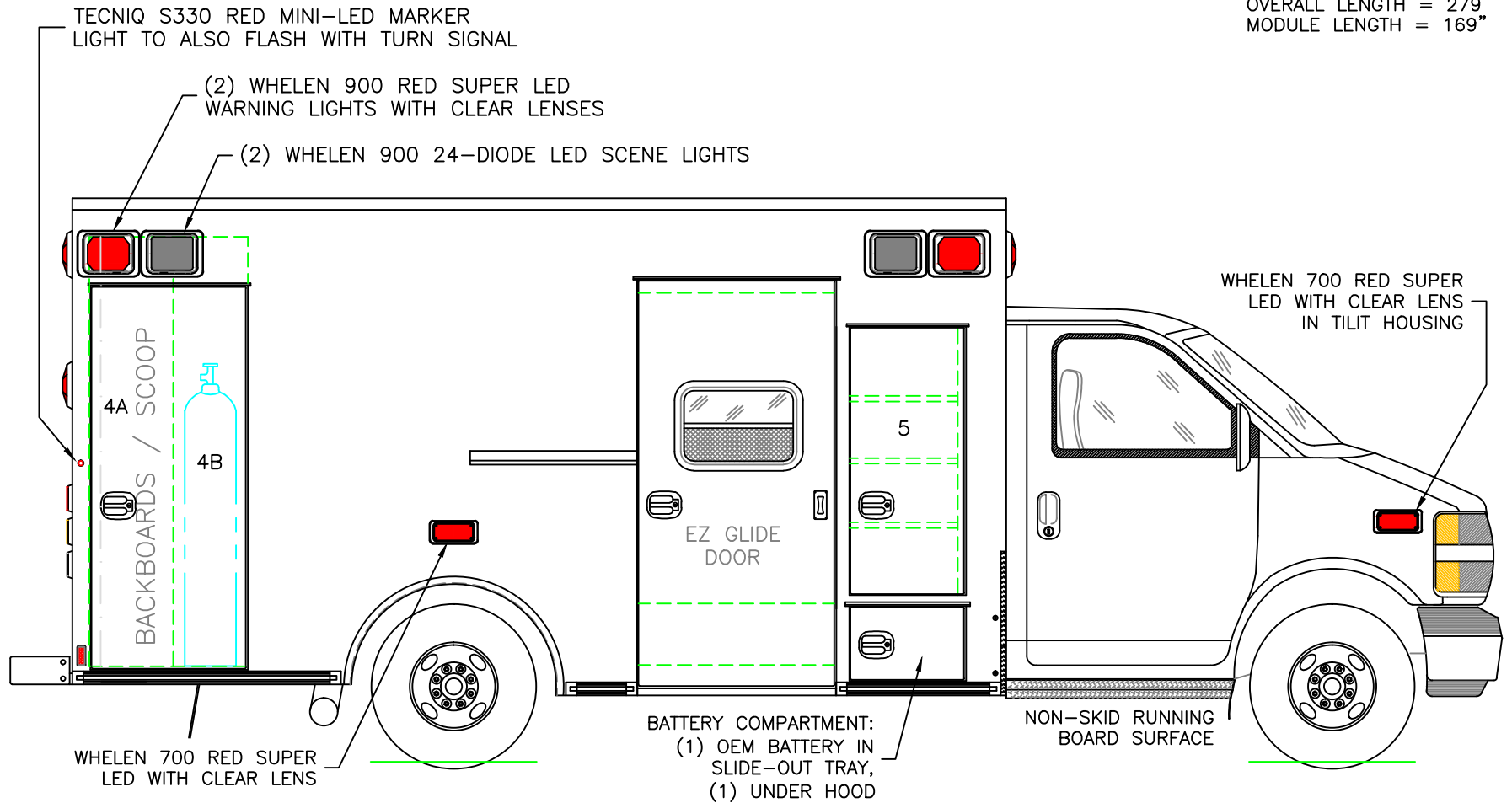
DATE:  
8-3-18

DWG.  
AAB

REV.  
NR

DRAWING NO.  
CHIEFXL-3

DIMENSIONS FOR OVERALL HEIGHT AND LENGTH ARE APPROXIMATE  
 OVERALL HEIGHT = 106.5"  
 OVERALL LENGTH = 279"  
 MODULE LENGTH = 169"



COMPARTMENT

O.S.S #4

CLEAR OPENING: 68.00h x 24.75w  
 INSIDE DIM'S. 4A: 77.75h x 15.00w x 20.75d  
 BACKBOARD/SCOOP STORAGE

INSIDE DIM'S. 4B: 77.75h x 13.50w x 12.00d  
 MAIN OXYGEN STORAGE

O.S.S #5

CLEAR OPENING: 46.75h x 17.25w  
 INSIDE DIM'S. 5: SEE PARTITION INTERIOR VIEW  
 INSIDE/OUTSIDE ACCESS WITH (3) ADJUSTABLE SHELVES

THIS DRAWING IS FOR REPRESENTATIONAL PURPOSES ONLY. DETAILS ARE CONCEPTUAL AND ARE SUBJECT TO CHANGE DURING DESIGN AND CONSTRUCTION  
 DIMENSIONS ARE APPROXIMATE UNLESS NOTED OTHERWISE TO MEET A SPECIFIC CUSTOMER NEED.

BRAUN  
 CHIEF XL

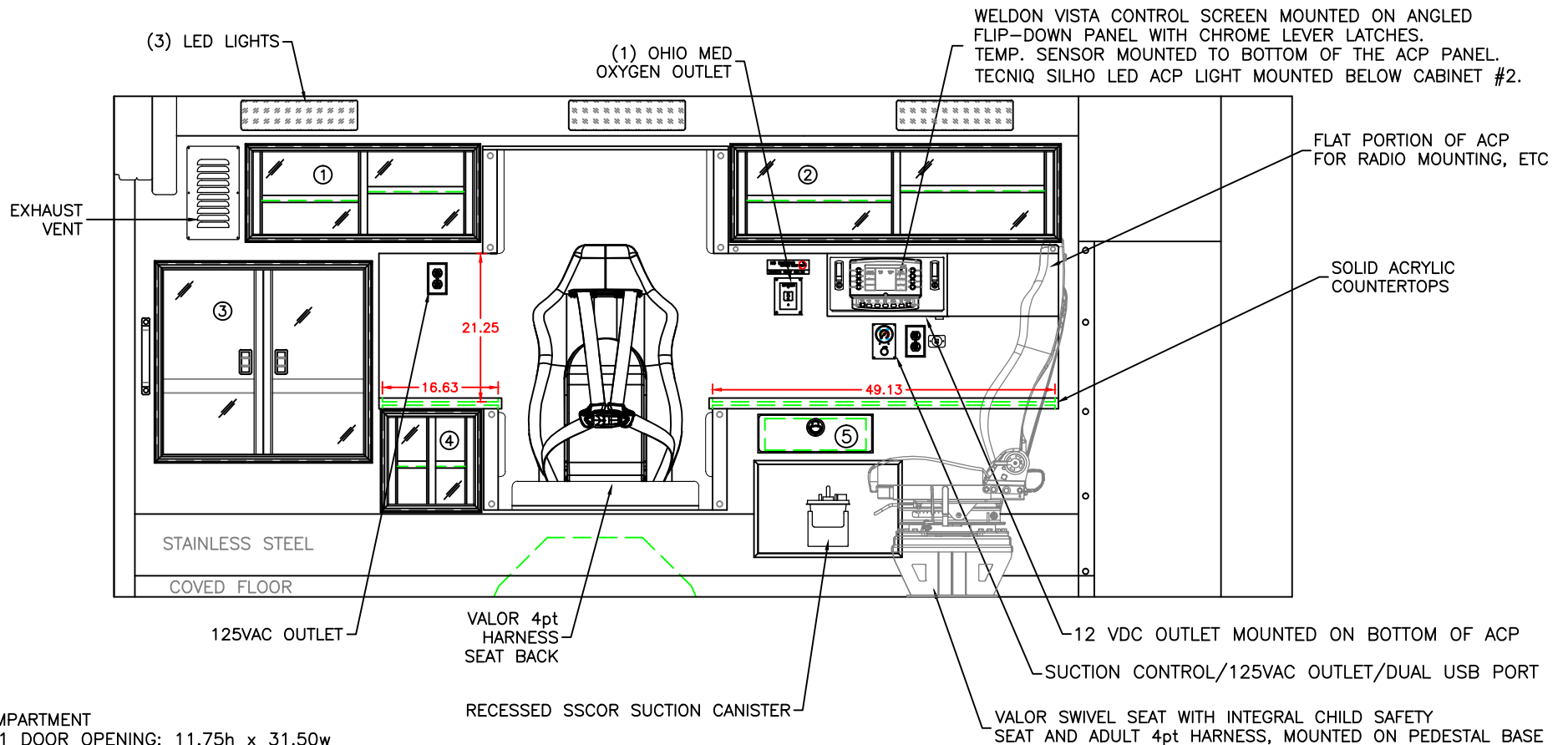


2019 CURBSIDE EXTERIOR VIEW  
 CHIEF XL-III/CHEVY G-4500 CHASSIS

DATE:  
 8-3-18

DWG. AAB REV. NR

DRAWING NO.  
 CHIEFXL-4



COMPARTMENT

#1 DOOR OPENING: 11.75h x 31.50w  
 INSIDE DIMS: 13.25h x 33.00w x 17.25d  
 (1) ADJ SHELF EACH SIDE OF CENTER DIVIDER  
 SLIDING POLYCARBONATE DOORS  
 TOTAL CABINET WEIGHT RATING = 25 lbs.

#2 DOOR OPENING: 11.75h x 45.00w  
 INSIDE DIMS: 13.25h x 46.50w x 17.25d  
 (1) ADJ SHELF EACH SIDE OF CENTER DIVIDER  
 SLIDING POLYCARBONATE DOORS  
 TOTAL CABINET WEIGHT RATING = 25 lbs.

#3 DOOR OPENING: 26.50h x 28.75w  
 INSIDE DIMS: O.S.S. #3  
 HINGED POLYCARBONATE DOORS WITH FULL LENGTH HANDLES  
 CENTER SQUEEZE LATCHES  
 TOTAL CABINET WEIGHT RATING = 40 lbs.

#4 DOOR OPENING: 12.50h x 12.25w  
 INSIDE DIMS: 14.00h x 13.75w x 17.25d  
 (1) ADJUSTABLE SHELF  
 SLIDING POLYCARBONATE DOORS  
 TOTAL CABINET WEIGHT RATING = 15 lbs.

#5 PULL-OUT DRAWER WITH HINGED ACRYLIC WRITING SURFACE  
 INSIDE DIMS: 4.50h x 14.50w x 13.25d  
 LOCKING STAINLESS STEEL FLUSH PULL LATCH  
 TOTAL DRAWER WEIGHT RATING = 10 lbs.

CABINETS TO BE ALUMINUM

THIS DRAWING IS FOR REPRESENTATIONAL PURPOSES ONLY. DETAILS ARE CONCEPTUAL AND ARE SUBJECT TO CHANGE DURING DESIGN AND CONSTRUCTION  
 DIMENSIONS ARE APPROXIMATE UNLESS NOTED OTHERWISE TO MEET A SPECIFIC CUSTOMER NEED.

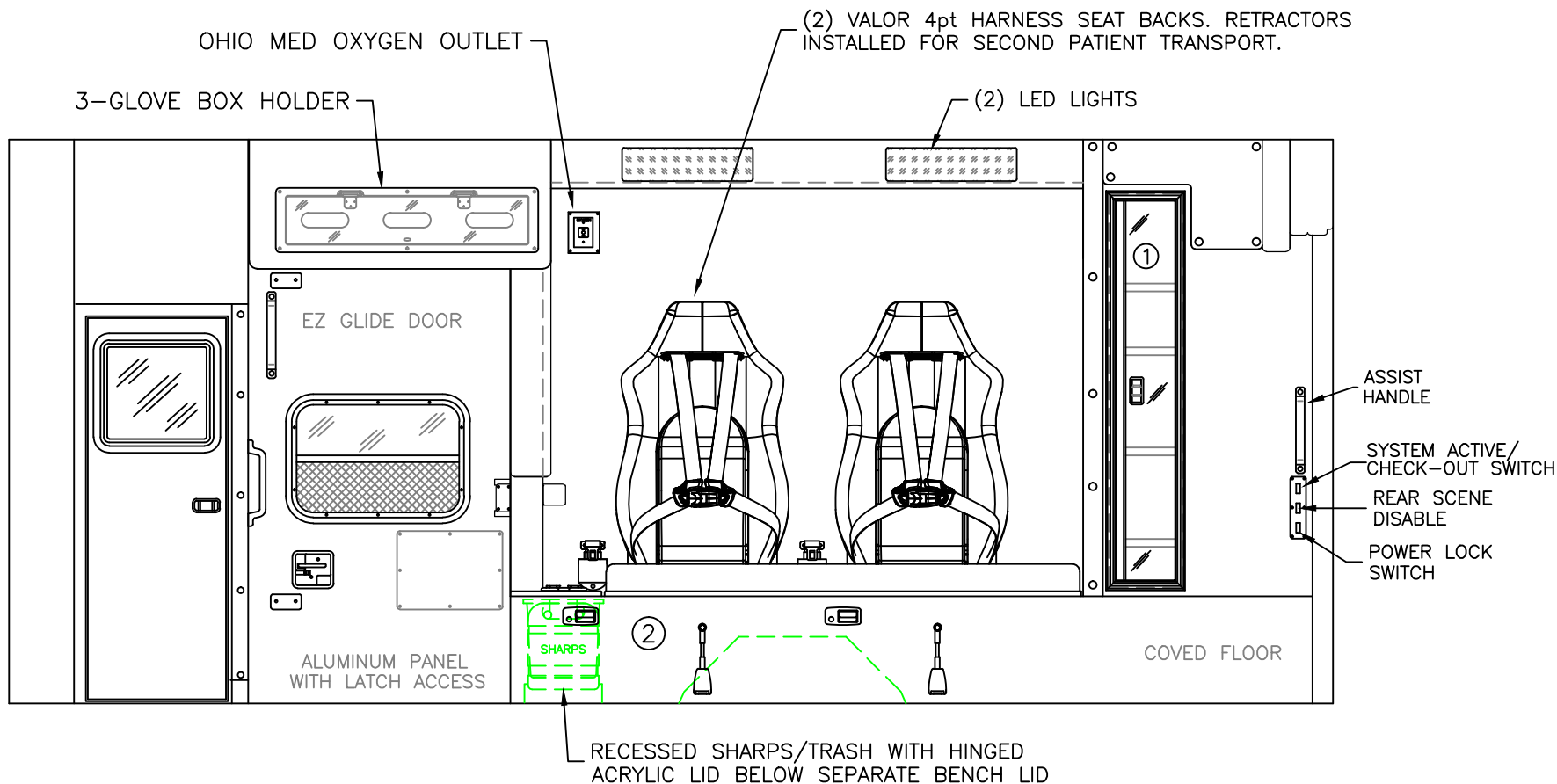
BRAUN  
 CHIEF XL



2019 STREETSIDE INTERIOR VIEW  
 CHIEF XL-III

DATE:  
8-3-18  
 DWG. AAB  
 REV. NR

DRAWING NO.  
 CHIEFXL-5



COMPARTMENT

#1 DOOR OPENING: 48.00h x 7.25w  
 INSIDE DIMS: 50.00h x 11.50w x 7.50d  
 HINGED POLYCARBONATE DOOR WITH FULL LENGTH HANDLE  
 CENTER SQUEEZE LATCH  
 (4) ADJUSTABLE SHELVES  
 TOTAL CABINET WEIGHT RATING = 25 lbs.

#2 INSIDE DIM'S: 14.25h x 72.00w x 21.00d

CABINETS TO BE ALUMINUM

THIS DRAWING IS FOR REPRESENTATIONAL PURPOSES ONLY. DETAILS ARE CONCEPTUAL AND ARE SUBJECT TO CHANGE DURING DESIGN AND CONSTRUCTION  
 DIMENSIONS ARE APPROXIMATE UNLESS NOTED OTHERWISE TO MEET A SPECIFIC CUSTOMER NEED.

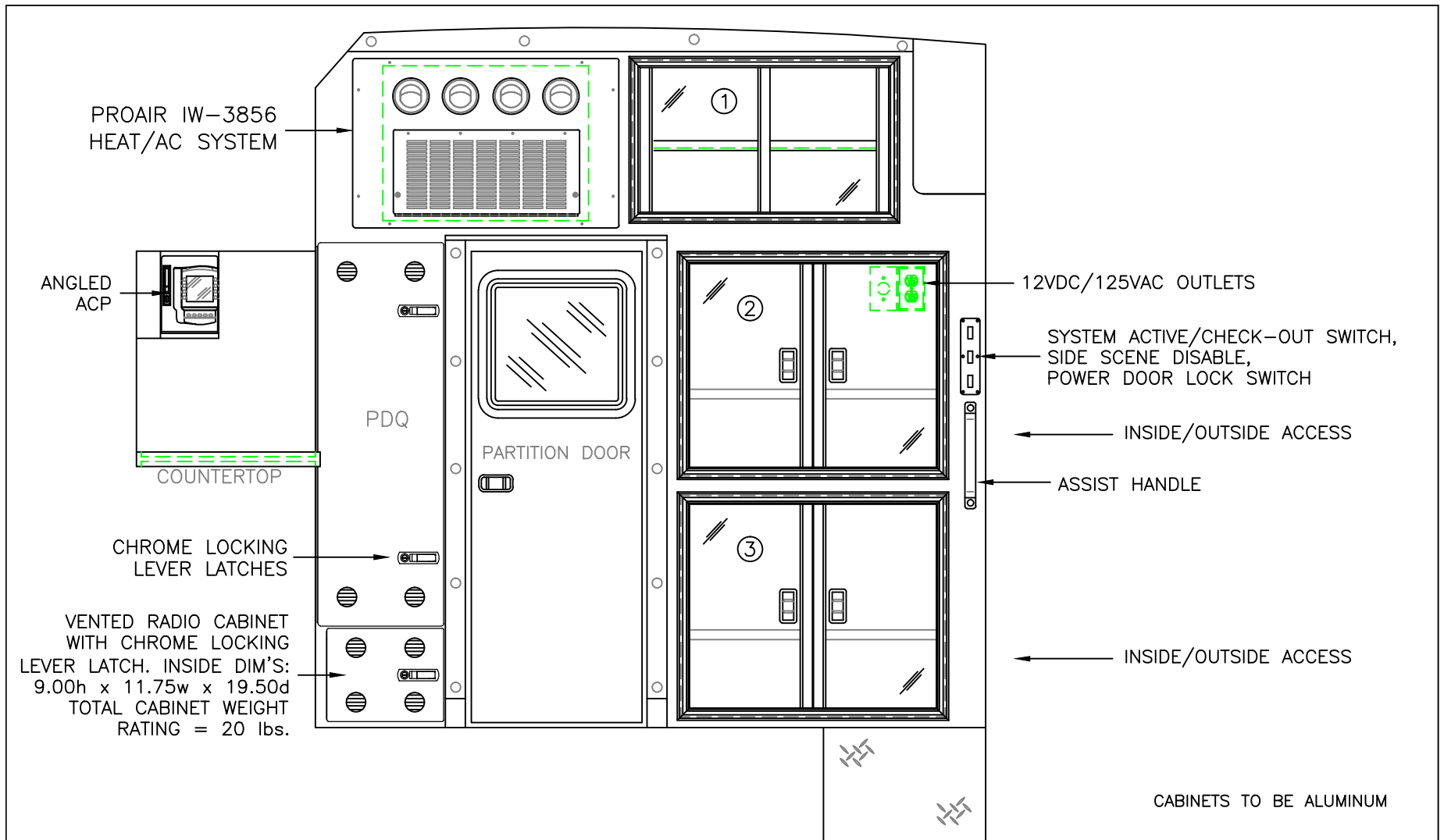
BRAUN  
 CHIEF XL



2019 CURBSIDE INTERIOR VIEW  
 CHIEF XL-III

DATE:  
 8-3-18  
 DWG.  
 AAB

DRAWING NO.  
 REV.  
 NR CHIEFXL-6



VENTED RADIO CABINET WITH CHROME LOCKING LEVER LATCH. INSIDE DIM'S: 9.00h x 11.75w x 19.50d  
 TOTAL CABINET WEIGHT RATING = 20 lbs.

COMPARTMENT  
 #1 DOOR OPENING: 15.00h x 25.75w  
 INSIDE DIMS: 16.50h x 27.25w x 17.00d  
 (1) ADJUSTABLE SHELF  
 SLIDING POLYCARBONATE DOORS  
 TOTAL CABINET WEIGHT RATING = 25 lbs.

#2 & #3 DOOR OPENINGS: 21.25h x 25.75w  
 INSIDE DIMS: 24.75h x 31.50w x 20.75d  
 HINGED POLYCARBONATE DOORS WITH FULL LENGTH HANDLES  
 CENTER SQUEEZE LATCHES  
 (1) ADJUSTABLE SHELF PER COMPARTMENT  
 TOTAL CABINET WEIGHT RATING = 60 lbs. EACH

THIS DRAWING IS FOR REPRESENTATIONAL PURPOSES ONLY. DETAILS ARE CONCEPTUAL AND ARE SUBJECT TO CHANGE DURING DESIGN AND CONSTRUCTION DIMENSIONS ARE APPROXIMATE UNLESS NOTED OTHERWISE TO MEET A SPECIFIC CUSTOMER NEED.

DATE: 8-3-18		DRAWING NO. CHIEFXL-7
DWG. AAB	REV. NR	

BRAUN  
 CHIEF XL



2019 PARTITION INTERIOR VIEW  
 CHIEF XL-III

CABINETS TO BE ALUMINUM

OXYGEN BYPASS

OXYGEN ACCESS

ALUMINUM PANEL  
WITH LATCH ACCESS

ALUMINUM PANEL  
WITH LATCH ACCESS

RED/WHITE REFLECTIVE STRIP  
ON INSIDE OF EACH DOOR

THIS DRAWING IS FOR REPRESENTATIONAL PURPOSES ONLY. DETAILS ARE CONCEPTUAL AND ARE SUBJECT TO CHANGE DURING DESIGN AND CONSTRUCTION DIMENSIONS ARE APPROXIMATE UNLESS NOTED OTHERWISE TO MEET A SPECIFIC CUSTOMER NEED.

BRAUN  
CHIEF XL



2019 REAR INTERIOR VIEW  
CHIEF XL-III

1:12

DATE:	8-3-18
DWG.	AAB NR
REV.	

DRAWING NO.	CHIEFXL-8
-------------	-----------



RECESSED SHARPS/TRASH WITH HINGED  
ACRYLIC LID BELOW SEPARATE BENCH LID

(8) LED  
DOME LIGHTS

OXYGEN STORAGE

BACKBOARDS  
SCOOP

96" GRAB RAIL

PDQ  
CAB'T

BACKBOARDS  
SCOOP

ACP PROFILE

 = (2) RECESSED CEILING IV HANGER LOCATIONS

 = (1) CEILING OXYGEN OUTLET

\* (2) ANTENNA BASES LOCATED OUTBOARD OF  
DOME LIGHTS WITH COAX SERVICE LOOP

96" FERNO STAT-TRAC CENTER MOUNT COT HARDWARE

MODULE WIDTH = 96"  
MODULE LENGTH = 169"  
MODULE HEAD ROOM = 72"

THIS DRAWING IS FOR REPRESENTATIONAL PURPOSES ONLY. DETAILS ARE CONCEPTUAL AND ARE SUBJECT TO CHANGE DURING DESIGN AND CONSTRUCTION DIMENSIONS ARE APPROXIMATE UNLESS NOTED OTHERWISE TO MEET A SPECIFIC CUSTOMER NEED.

BRAUN  
CHIEF XL



2019 FLOOR INTERIOR VIEW  
CHIEF XL-III

DATE: 8-3-18	DRAWING NO.
DWG. AAB	REV. NR

DRAWING NO.  
CHIEFXL-9