

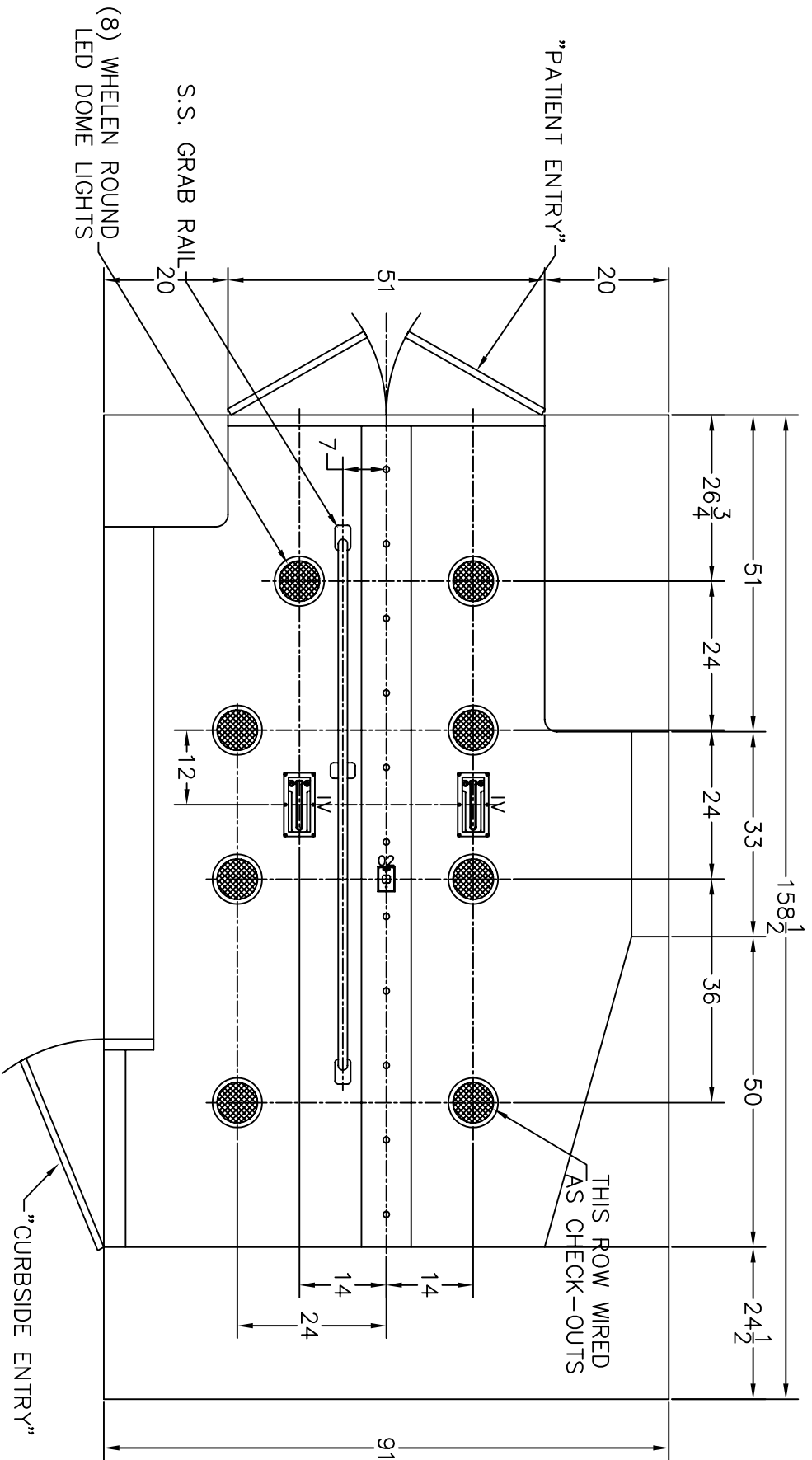
NOTES: THIS DRAWING IS NOT TO SCALE. CHARACTERISTICS AND DIMENSIONS OF FINISHED PRODUCT MAY VARY.

NOTES:

- 1.) COMPARTMENT DIMENSIONS REFLECT OPENING CLEARANCE.
- 2.) APPROXIMATE COMPARTMENT DEPTH=19"DEEP.
- 3.) MODULE DIMENSIONS=168"L x 96"W x 89"H.
- 4.) INTERIOR MODULE HEAD ROOM=72"H.
- 5.) ALL 9x7 LIGHTS TO BE WHELEN 900 SERIES LIGHTS.
- 6.) DOUBLE STAINLESS THRESHOLDS.
- 7.) STYROFOAM INSULATION, WALLS & CEILING.

Rev.#	Revision Description	Date	Rev'd	App'vd
3				
2				
1				

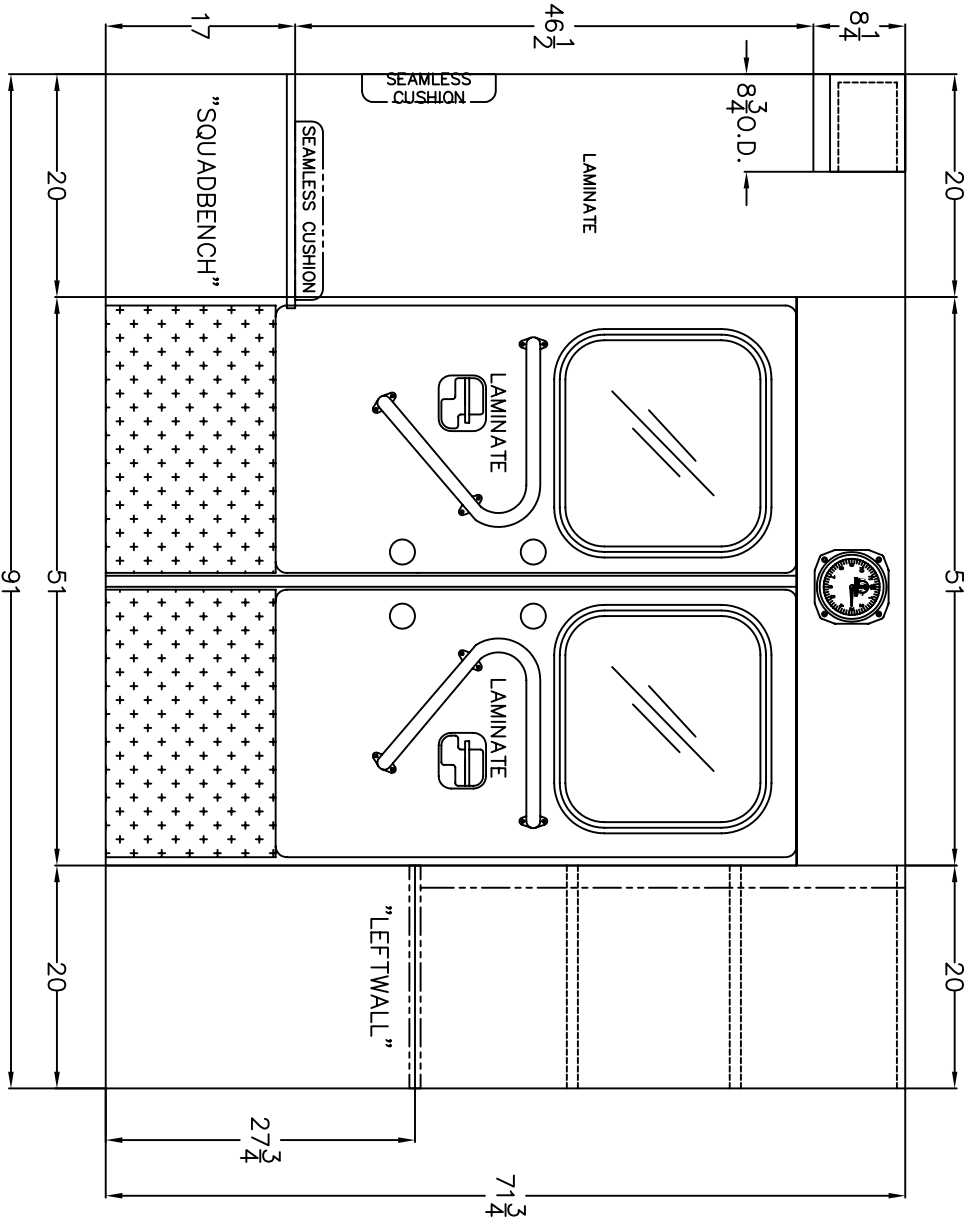
Stock/Job#:	Drawing#:	Cust. App'v/Date#:	Deal'r App'v/Date:
Osage Dealer:	13-3-2168-SW-100		
End Customer:			
NOTICE			
This drawing and/or the information hereon is the exclusive property of Osage Industries and shall not be reproduced, used or disclosed without the authorized written consent of Osage Industries.			
Drawn By:	S.A.H.	Date:	09-04-12
Drawing Description:	EXTERIOR LAYOUT		
	TYPE-III 2168 SUPER-WARRIOR, ESERIES		
Scale:	NOT TO SCALE		
Revision#:	1		
Osage Industries, Inc.		LINN, MO. 65051	
TWIN RIDGE ROAD		P.O. BOX 718	



NOTES: THIS DRAWING IS NOT TO SCALE.
 CHARACTERISTICS AND DIMENSIONS OF FINISHED
 PRODUCT MAY VARY.

3									
2									
1									
Rev.#	Revision Description	Date	Rev'd	App'vd	Stock/Job#	Drawing#	Cust. App'v/Date#	Deq'r App'v/Date:	
					Osage Dealer:	13-3-2168-SW-105			
					End Customer:	TWIN RIDGE ROAD			
					NOTICE				
					This drawing and/or the information hereon is the exclusive property of Osage Industries and shall not be reproduced, used or disclosed without the authorized written consent of Osage Industries.				
					Drawn By:	S.A.H.	Date:	09-04-12	Scale:
					Drawing Description:	CEILING LAYOUT			
						TYPE-III 2168 SUPER-WARRIOR, ESERIES			
									NOT TO SCALE
									Revision#

Osage Industries, Inc.
 TWIN RIDGE ROAD
 P.O. BOX 718
 LINN, MO. 65051

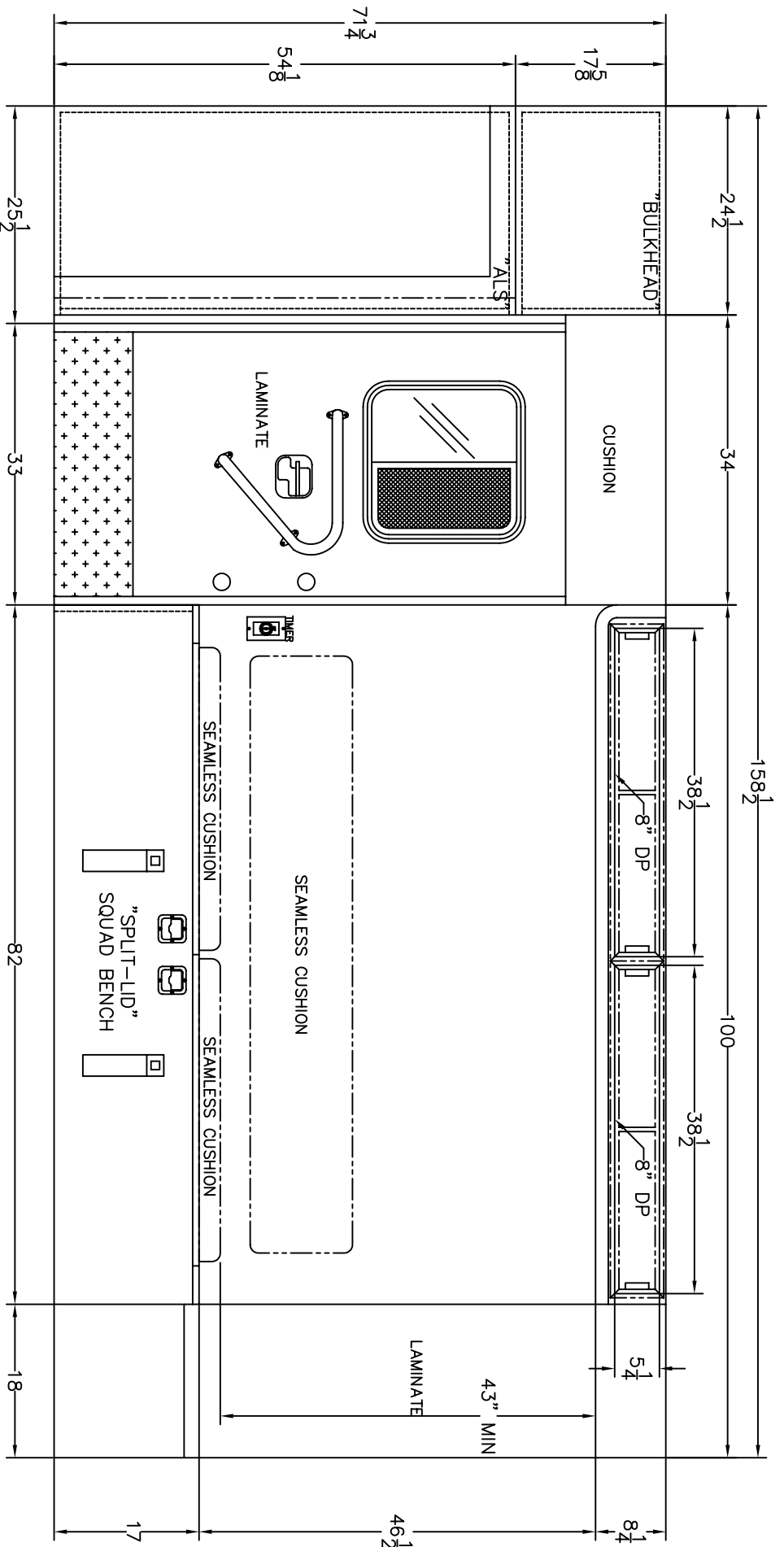


NOTES: THIS DRAWING IS NOT TO SCALE.
 CHARACTERISTICS AND DIMENSIONS OF FINISHED PRODUCT MAY VARY.
 NOTES: CABINET DEPTHS REPRESENT DIMENSION FROM INSIDE REAR TO FRONT FACE OF CABINETS, WITHOUT TRIM. ACTUAL WORKING DEPTH WILL BE LESS THAN DIMENSION SHOWN UNLESS OTHERWISE SPECIFIED.

Rev.#	Revision Description	Date	Rev'd	App'vd
3				
2				
1				

Stock/Job#:	Drawing#:	Cust. App'v/Date#	Deal'r App'v/Date:
Osage Dealer:	13-3-2168-SW-104		
End Customer:			
NOTICE			
This drawing and/or the information hereon is the exclusive property of Osage Industries and shall not be reproduced, used or disclosed without the authorized written consent of Osage Industries.			
Drawn By:	S.A.H.	Date:	09-04-12
Drawing Description:	REARWARD INTERIOR		
	TYPE-III 2168 SUPER-WARRIOR, E SERIES		
Scale:	NOT TO SCALE		
Revision#			

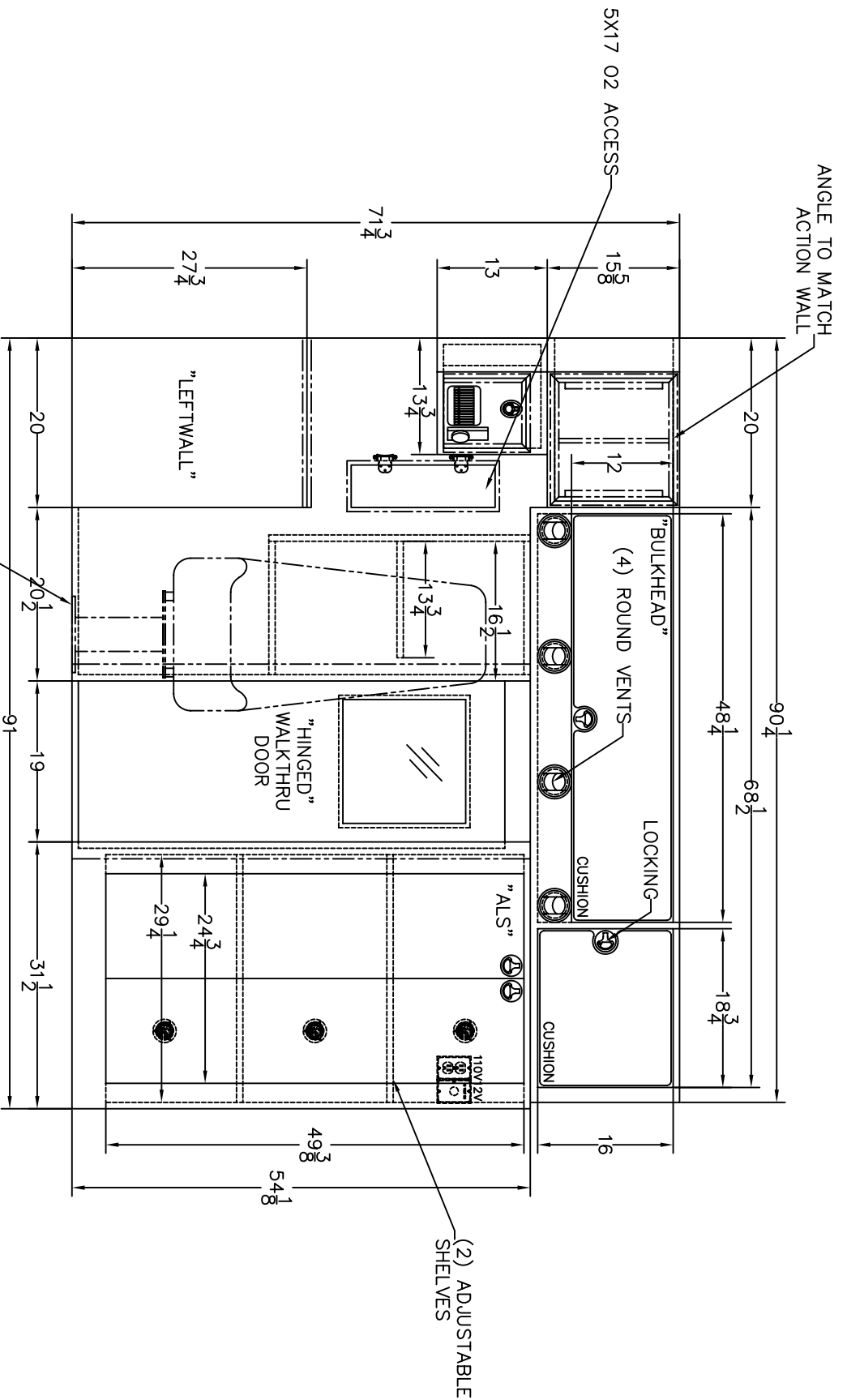
Osage Industries, Inc.
 TWIN RIDGE ROAD
 P.O. BOX 718
 LINN, MO. 65051



NOTES: THIS DRAWING IS NOT TO SCALE.
 CHARACTERISTICS AND DIMENSIONS OF FINISHED PRODUCT MAY VARY.

NOTES: CABINET DEPTHS REPRESENT DIMENSION FROM INSIDE REAR TO FRONT FACE OF CABINETS, WITHOUT TRIM. ACTUAL WORKING DEPTH WILL BE LESS THAN DIMENSION SHOWN UNLESS OTHERWISE SPECIFIED.

3								
2								
1								
Rev.#	Revision Description	Date	Rev'd	App'vd	Stock/Job#	Drawing#	Cust. App'v/Date#	Decl'r App'v/Date:
					Osage Dealer:	13-3-2168-SW-103		
					End Customer:			
NOTICE					This drawing and/or the information hereon is the exclusive property of Osage Industries and shall not be reproduced, used or disclosed without the authorized written consent of Osage Industries.			
					Osage Industries, Inc. TWIN RIDGE ROAD P.O. BOX 718 LINN, MO. 65051			
					Drawing Description: CURBSIDE INTERIOR TYPE-III 2168 SUPER-WARRIOR, ESERIES Scale: NOT TO SCALE Date: 09-04-12 Drawn By: S.A.H. Revision#			

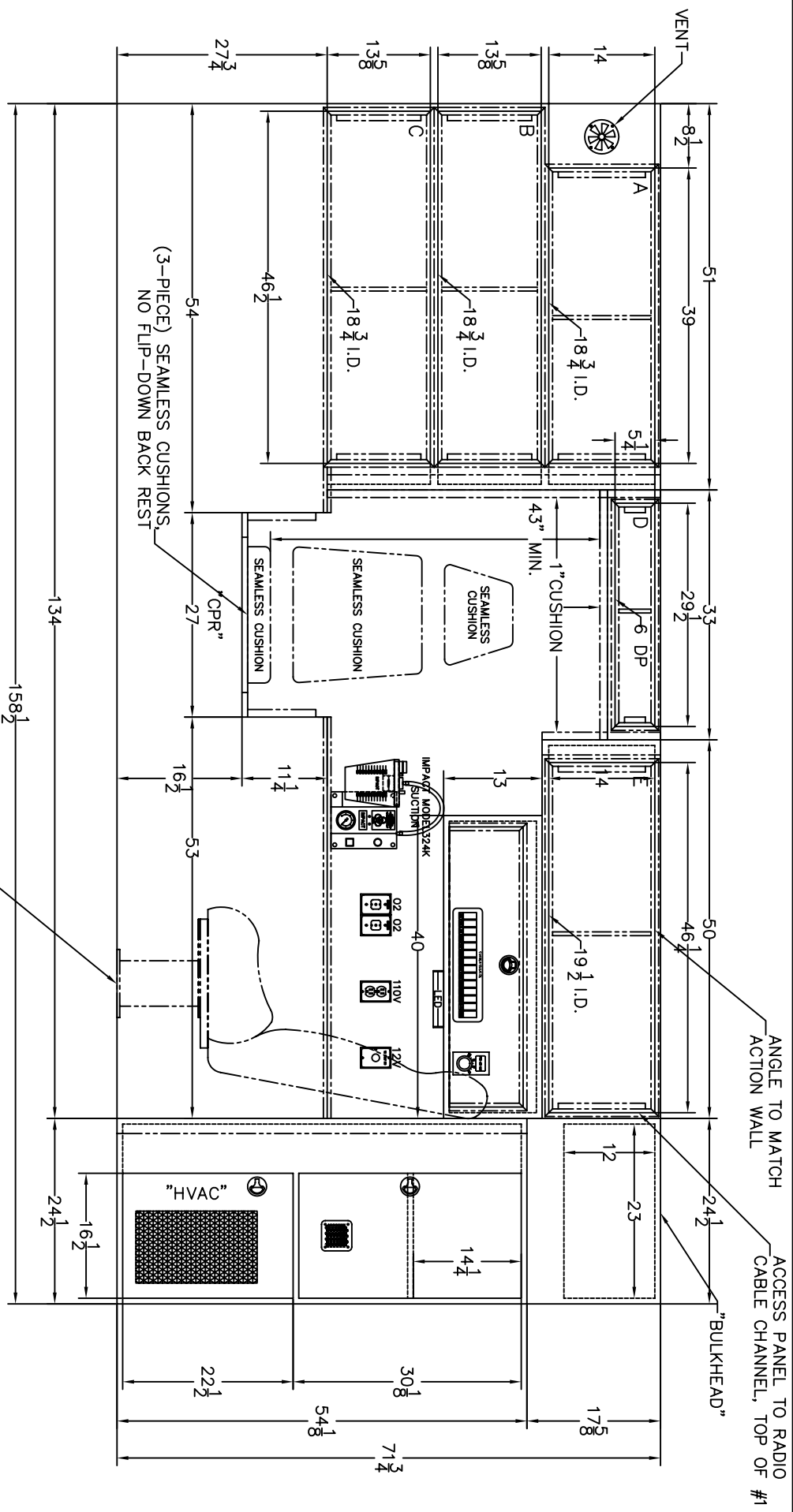


NOTES: THIS DRAWING IS NOT TO SCALE.
 CHARACTERISTICS AND DIMENSIONS OF FINISHED PRODUCT MAY VARY.

NOTES: CABINET DEPTHS REPRESENT DIMENSION FROM INSIDE REAR TO FRONT FACE OF CABINETS, WITHOUT TRIM. ACTUAL WORKING DEPTH WILL BE LESS THAN DIMENSION SHOWN UNLESS OTHERWISE SPECIFIED.

Rev.#	Revision Description	Date	Rev'd	App'vd
3				
2				
1				

Stock/Job#	Drawing#	Cust. App'v/Date#	Decl'r App'v/Date:
Osage Dealer:	13-3-2168-SW-102		
End Customer:	TWIN RIDGE ROAD		
	Osage Industries, Inc.		
	P.O. BOX 718		
	LINN, MO. 65051		
NOTICE		Drawn By:	Date:
This drawing and/or the information hereon is the exclusive property of Osage Industries and shall not be reproduced, used or disclosed without the authorized written consent of Osage Industries.		S.A.H.	09-04-12
Drawing Description:		Scale:	
FORWARD INTERIOR		NOT TO SCALE	
TYPE-III 2168 SUPER-WARRIOR, ESERIES		Revision#	



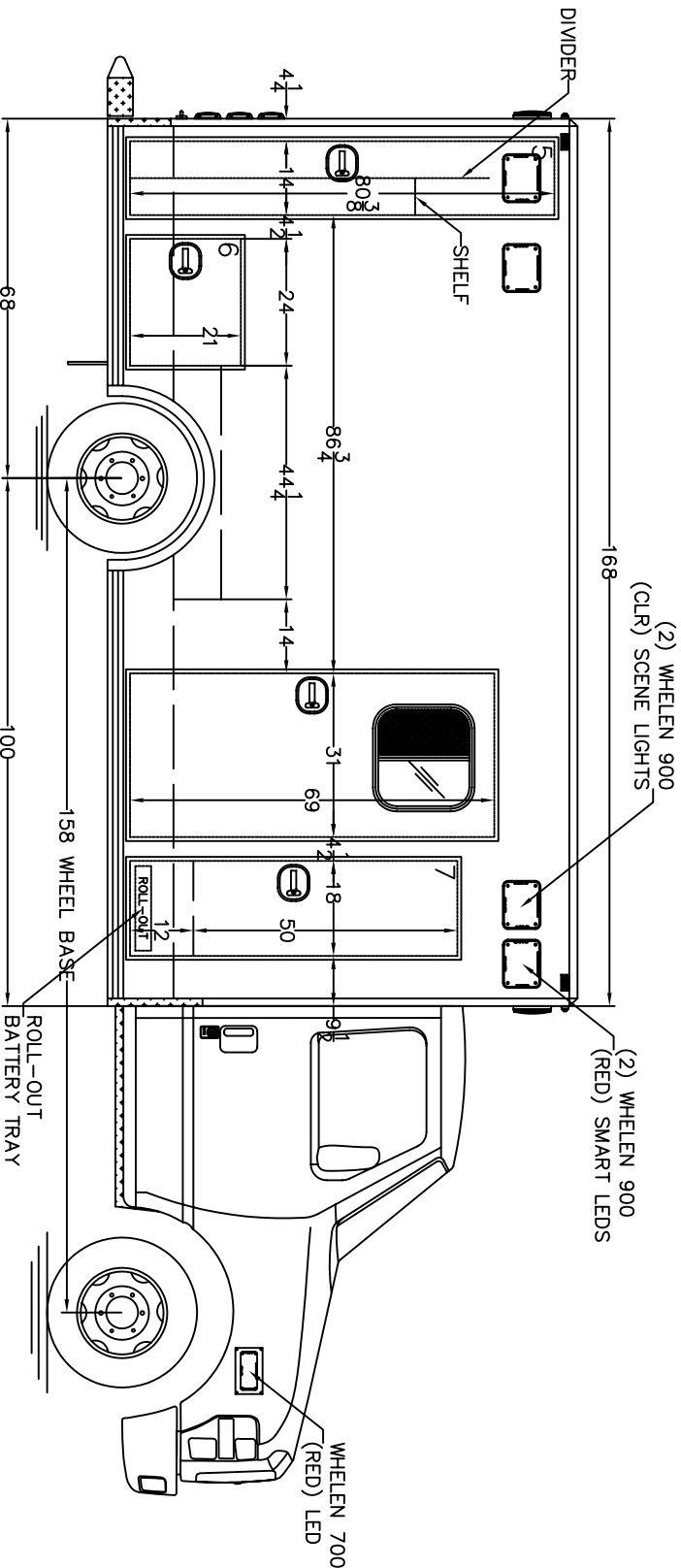
(3-PIECE) SEAMLESS CUSHIONS,
NO FLIP-DOWN BACK REST

E.V.S. 1750 SAFE-LINE
ATTENDANT SEAT

NOTES: THIS DRAWING IS NOT TO SCALE.
CHARACTERISTICS AND DIMENSIONS OF FINISHED PRODUCT MAY VARY.
NOTES: CABINET DEPTHS REPRESENT DIMENSION FROM INSIDE REAR TO FRONT FACE OF CABINETS, WITHOUT TRIM. ACTUAL WORKING DEPTH WILL BE LESS THAN DIMENSION SHOWN UNLESS OTHERWISE SPECIFIED.

Rev.#	Revision Description	Date	Rev'd	App'vd
3				
2				
1				

Stock/Job#:	Drawing#:	Cust. App'v/Date#:	Deal'r App'v/Date:
Osage Dealer:	13-3-2168-SW-101		
End Customer:			
NOTICE			
This drawing and/or the information hereon is the exclusive property of Osage Industries and shall not be reproduced, used or disclosed without the authorized written consent of Osage Industries.			
Drawn By:	S.A.H.	Date:	09-04-11
Drawing Description:	NOT TO SCALE		
TYPE-III 2168 SUPER-WARRIOR, ESERIES	Revision#		
Osage Industries, Inc.		LINN, MO. 65051	
TWIN RIDGE ROAD		P.O. BOX 718	

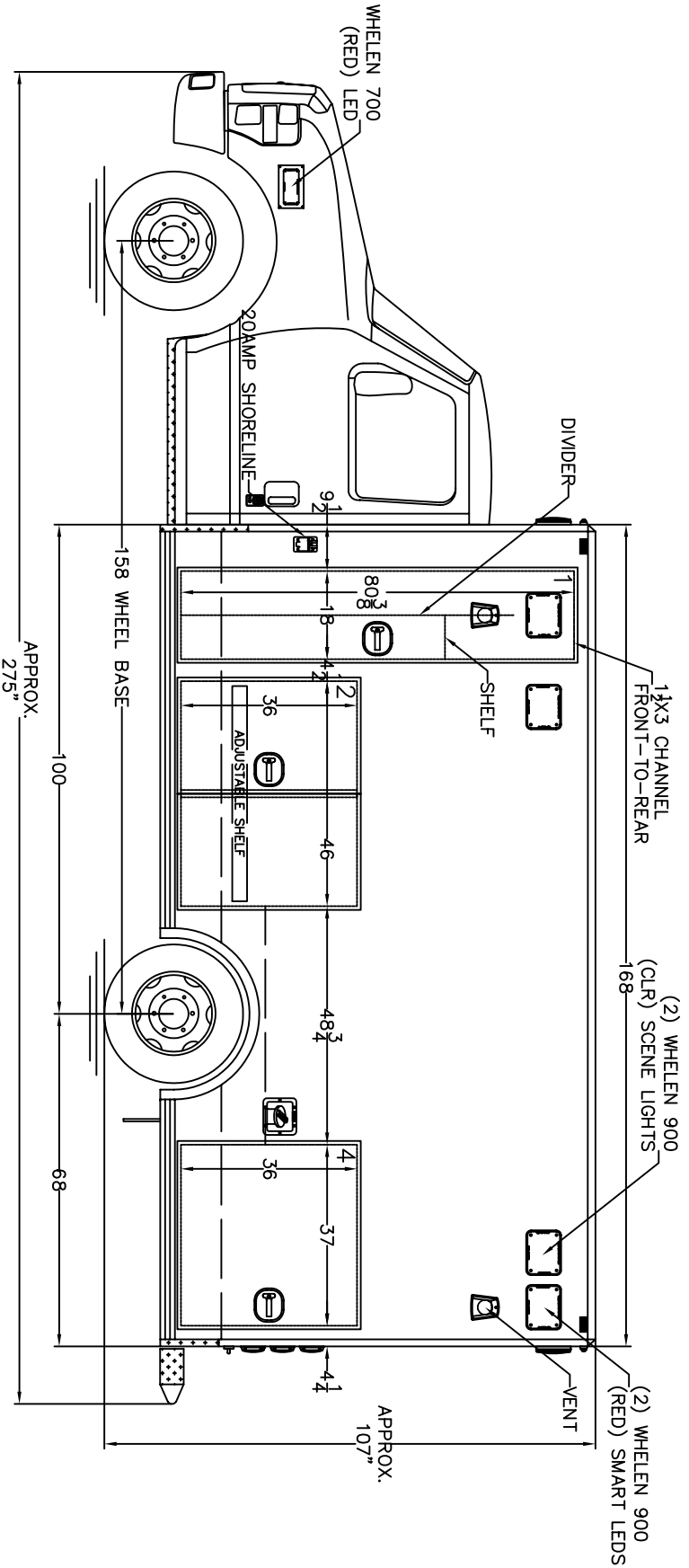


NOTES: THIS DRAWING IS NOT TO SCALE.
 CHARACTERISTICS AND DIMENSIONS OF FINISHED PRODUCT MAY VARY.

- NOTES:
- 1.) COMPARTMENT DIMENSIONS REFLECT OPENING CLEARANCE.
 - 2.) APPROXIMATE COMPARTMENT DEPTH=19"DEEP.
 - 3.) MODULE DIMENSIONS=168"L x 96"W x 89"H.
 - 4.) INTERIOR MODULE HEAD ROOM=72"H.
 - 5.) ALL 9x7 LIGHTS TO BE WHELEEN 900 SERIES LIGHTS.
 - 6.) DOUBLE STAINLESS THRESHOLDS.
 - 7.) STYROFOAM INSULATION, WALLS & CEILING.

3				
2				
1				
Rev.#	Revision Description	Date	Rev'd	App'vd

Stock/Job#:	Drawing#:	Cust. App'v/Date#	Deal'r App'v/Date:
Osage Dealer:	13-3-2168-SW-100		
End Customer:	TWINRIDGE ROAD		
	Osage Industries, Inc.		
	P.O. BOX 718		
	LINN, MO. 65051		
NOTICE		Drawn By:	Date:
This drawing and/or the information hereon is the exclusive property of Osage Industries and shall not be reproduced, used or disclosed without the authorized written consent of Osage Industries.		S.A.H.	09-04-12
Drawing Description:		Scale:	NOT TO SCALE
EXTERIOR LAYOUT, CURBSIDE TYPE-III 2168 SUPER-WARRIOR, ESERIES			Revision#
			1



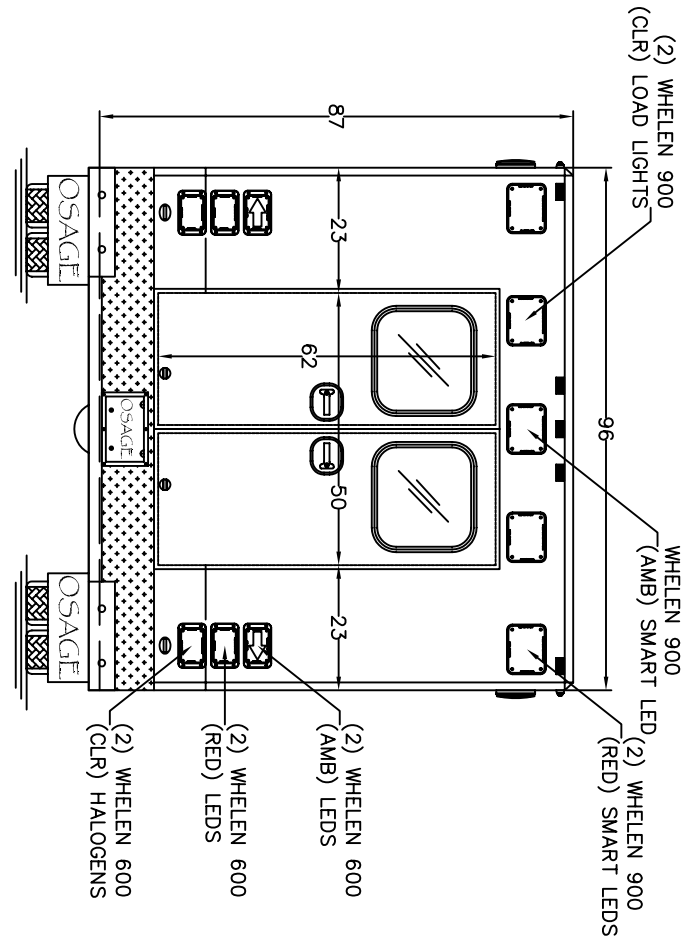
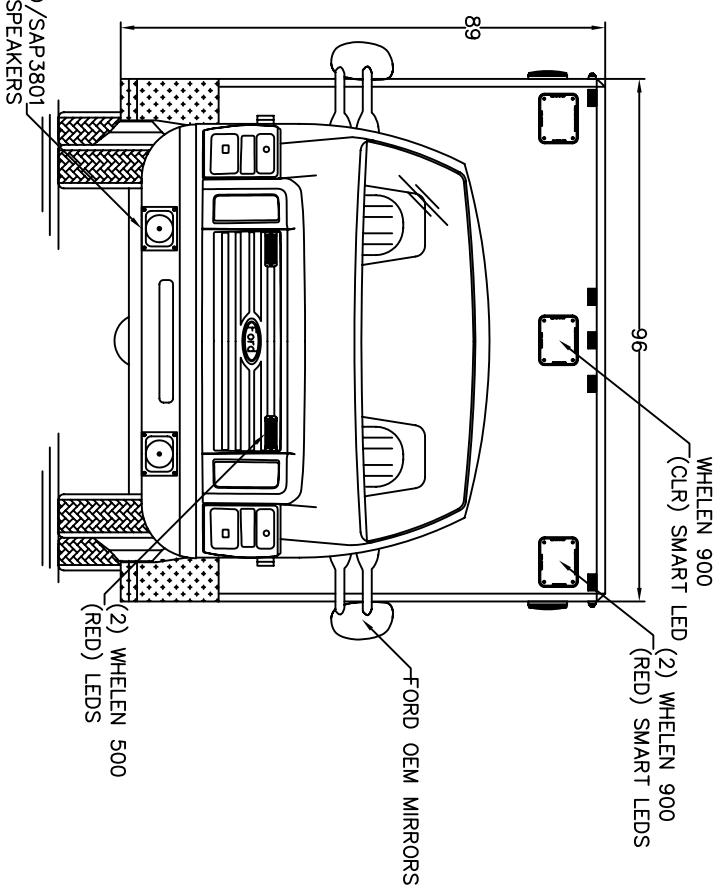
NOTES: THIS DRAWING IS NOT TO SCALE.
 CHARACTERISTICS AND DIMENSIONS OF FINISHED PRODUCT MAY VARY.

NOTES:

- 1.) COMPARTMENT DIMENSIONS REFLECT OPENING CLEARANCE.
- 2.) APPROXIMATE COMPARTMENT DEPTH=19"DEEP.
- 3.) MODULE DIMENSIONS=168"L x 96"W x 89"H.
- 4.) INTERIOR MODULE HEAD ROOM=72"H.
- 5.) ALL 9x7 LIGHTS TO BE WHELEEN 900 SERIES LIGHTS.
- 6.) DOUBLE STAINLESS THRESHOLDS.
- 7.) STYROFOAM INSULATION, WALLS & CEILING.

3			
2			
1			
Rev.#	Revision Description	Date	Rev'd App'vd

Stock/Job#:	Drawing#:	Cust. App'v/Date#	Deal'r App'v/Date:
Osage Dealer:	13-3-2168-SW-100		
End Customer:	TWIN RIDGE ROAD		
	Osage Industries, Inc.		
	P.O. BOX 718		
	LINN, MO. 65051		
NOTICE			
This drawing and/or the information hereon is the exclusive property of Osage Industries and shall not be reproduced, used or disclosed without the authorized written consent of Osage Industries.			
Drawing Description:	Drawn By:	Date:	Scale:
EXTERIOR LAYOUT, STREETSIDE TYPE-III 2168 SUPER-WARRIOR, ESERIES	S.A.H.	09-04-12	NOT TO SCALE
			Revision#
			1

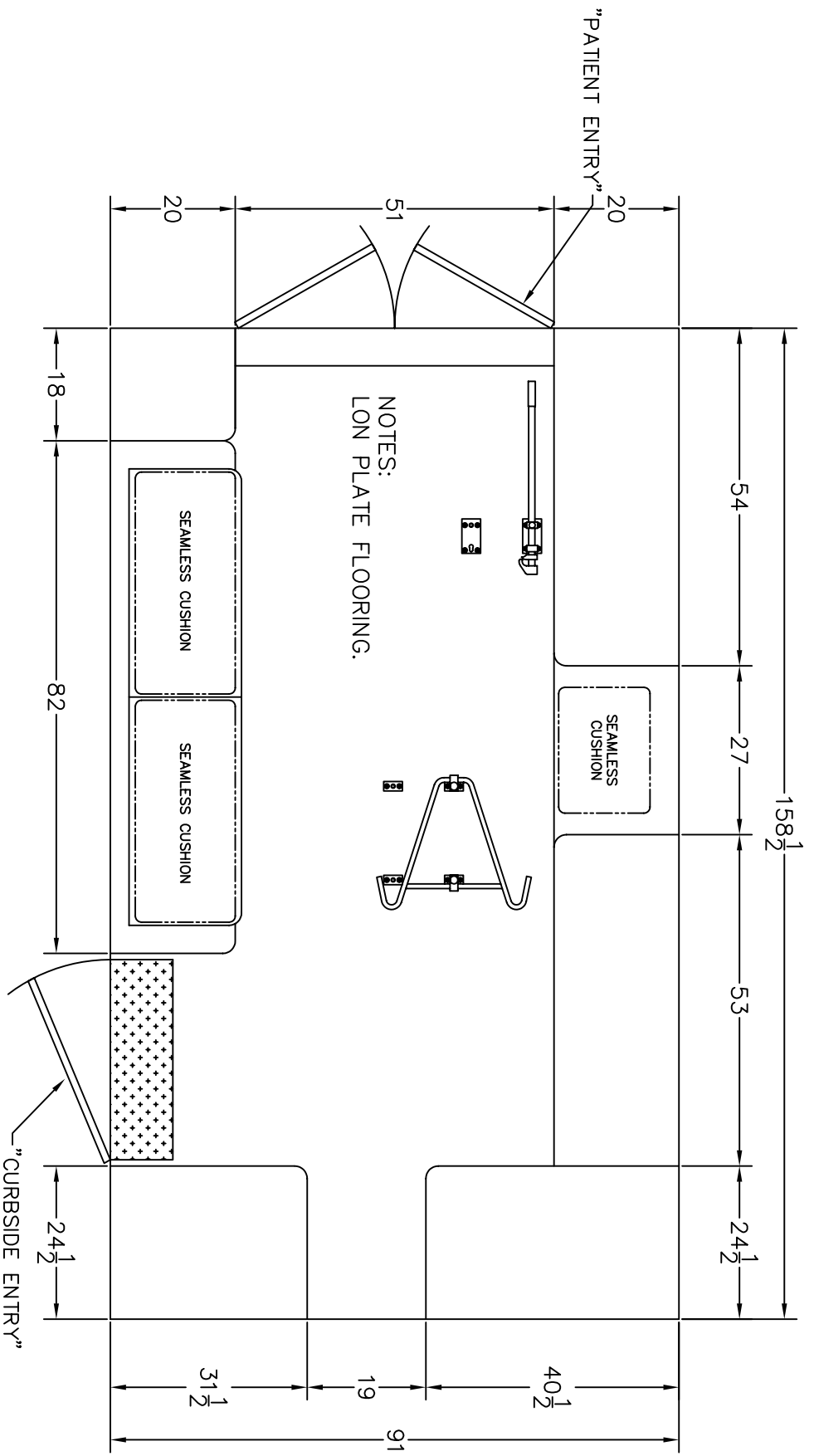


NOTES: THIS DRAWING IS NOT TO SCALE.
 CHARACTERISTICS AND DIMENSIONS OF FINISHED PRODUCT MAY VARY.

- NOTES:
- 1.) COMPARTMENT DIMENSIONS REFLECT OPENING CLEARANCE.
 - 2.) APPROXIMATE COMPARTMENT DEPTH=19"DEEP.
 - 3.) MODULE DIMENSIONS=168"L x 96"W x 89"H.
 - 4.) INTERIOR MODULE HEAD ROOM=72"H.
 - 5.) ALL 9x7 LIGHTS TO BE WHELEN 900 SERIES LIGHTS.
 - 6.) DOUBLE STAINLESS THRESHOLDS.
 - 7.) STYROFOAM INSULATION, WALLS & CEILING.

3			
2			
1			
Rev.#	Revision Description	Date	Rev'd App'vd

Stock/Job #:	Drawing#	Cust. App'v/Date#	Deal'r App'v/Date:
Osage Dealer:	13-3-2168-SW-100		
End Customer:	TWIN RIDGE ROAD Osage Industries, Inc. P.O. BOX 718 LINN, MO. 65051		
NOTICE			
This drawing and/or the information hereon is the exclusive property of Osage Industries and shall not be reproduced, used or disclosed without the authorized written consent of Osage Industries.			
Drawing Description:		Date:	Scale:
EXTERIOR LAYOUT, FRONT/REAR TYPE-III 2168 SUPER-WARRIOR, ESERIES		09-04-12	NOT TO SCALE
Drawn By: S.A.H.			Revision #
			1



NOTES: THIS DRAWING IS NOT TO SCALE.
 CHARACTERISTICS AND DIMENSIONS OF FINISHED
 PRODUCT MAY VARY.

3				
2				
1				
Rev.#	Revision Description	Date	Rev'd	App'vd

Stock/Job#:	Drawing#:	Cust. App'v/Date#:	Decl'r App'v/Date:
Osage Dealer:	13-3-2168-SW-106		
End Customer:	Drawn By:	Date:	Scale:
	S.A.H.	09-04-12	NOT TO SCALE
NOTICE		Osage Industries, Inc.	
This drawing and/or the information hereon is the exclusive property of Osage Industries and shall not be reproduced, used or disclosed without the authorized written consent of Osage Industries.		TWIN RIDGE ROAD P.O. BOX 718 LINN, MO. 65051	
Drawing Description:		FLOOR LAYOUT	
TYPE-III 2168 SUPER-WARRIOR, ESERIES		Revision#	